

## ② Make an evacuation plan

### 2-1. Actions to be taken in heavy rains

If your area is experiencing heavy rains, gather the necessary information yourself and promptly make an evacuation decision.

#### Disaster management radio communication

Disaster prevention information is broadcast through outdoor broadcast speakers. Evacuation information is broadcast at maximum volume after the sound of a siren.

Check the following sources for the broadcast content of the emergency radio for disaster prevention

- ① Telephone service: Check the broadcast content on phone ☎ 055 (298) 4471
- ② NNS (TV channel 11) data broadcast

③ Kofu City disaster prevention/ crime prevention newsletter

- ④ Kofu City disaster prevention app
- ⑤ Kofu City disaster prevention portal

#### Email

##### Kofu City Disaster Prevention Email Newsletter

The content broadcast on emergency radio for disaster prevention or the evacuation information will be delivered by email.

- ① Send us a blank email at [city-kofu@cousmail-entry.cous.jp](mailto:city-kofu@cousmail-entry.cous.jp) or scan the QR code on the right.
  - ② After sending an email, you will receive an email informing that your temporary registration has been received
  - ③ Within 30 minutes of receiving the email, access the URL in the email body, check the "Kofu City Disaster Prevention Email Newsletter", and select the "Confirm" button
  - ④ Lastly, select the "Register" button to complete your registration
- Attention! ■■■  
If your spam filter on, you will not receive the confirmation email. In that case, turn off your spam filter and allow messages from a sender with domain, [mlmaster@info.cous.jp]

#### Emergency information email

The emergency information is distributed all at once to the mobile phones of all the citizens. Check the user's manual of your mobile phone, or contact your phone dealer to see if your phone can receive emergency information emails. Depending on the model, you may have to configure the settings in advance.

#### Internet

##### Kofu City Disaster Prevention Application

This is a free disaster prevention app which may be available on your smartphone or tablet. This app has some functions, which you may find very useful during a disaster or even in a normal situation. The functions include weather information, disaster prevention information, and disaster prevention maps, which allow you to look for a nearest evacuation shelter from your current location.

##### How to Register

You can download an app from the Google Play or the App Store. Although the installation and usage is free, communication expenses are to be borne by the user



##### Kofu City disaster prevention portal

Real-time information regarding evacuation and evacuation shelters announced by Kofu City will be posted on this portal.

<https://kofu-city.secure.force.com/>

##### Kofu City's official webpage

Disaster and crime prevention information and relevant information will be posted on the top page during an emergency.

<https://www.city.kofu.yamanashi.jp/>

#### TV data broadcast

You can check all kinds of disaster prevention evacuation information and information about

information such as evacuation centers.

##### 【For NNS (channel 11)】

- ① Press the "d" button on your remote control
  - ② Select "Notification from Prefecture/Kofu City", and press the "Select" button
- ※ Select "River water level/sediment disaster warning information" to check the information regarding rivers and sediment disaster information issued by the state or the prefecture
- ③ Select "Emergency information" or "Kofu City Disaster Prevention Email Newsletter" and press the "Select" button

##### 【For NHK】

- ① Press the "d" button on your remote control
- ② Select "Disaster prevention/daily life information", and press the "Select" button
- ③ Choose among "Evacuation information", "Evacuation shelter information", or "River water level/precipitation amount information", and then press "Select" button

Press "d" button on your remote control to get relevant information on your TV.



##### Water level information for rivers (Ministry of Land, Infrastructure, Transport and Tourism)

Besides the rivers under the management of Yamanashi Prefecture, you can check the water level information or surveillance camera footage for rivers under the management of the state as well.

<http://k.river.go.jp>



##### Yamanashi Prefecture Sediment Disaster Risk Information System

Based on the forecast information provided by the Meteorological Office, you can check the risk of sediment disaster for an area of about 1 km in all directions (Marked mesh patterns).

<http://www3.pref.yamanashi.jp/dosya/warninfo.html>



##### Power outage information (TEPCO Power Grid, Inc.)

You can check power outage information.

<http://teideninfo.tepco.co.jp/flash/index-j.html>



##### Integrated River Information System

Get real-time precipitation amount of different locations in Yamanashi Prefecture and water level information

<http://www3.pref.yamanashi.jp/yamanashiweb/>



##### Japan Meteorological Agency

The Japan Meteorological Agency has announced the "KIKIKURU (Real-time risk map)" that shows the increase in disaster risk level due to heavy rains in five color-coded stages on map. Check the website of the Japan Meteorological Agency for details.

<https://www.jma.go.jp>



## Evacuation Methods

There are 2 different evacuation methods: "Horizontal evacuation" and "Vertical evacuation". "Horizontal evacuation" is the method of moving people away from the area of danger to a safer place on the same floor. This method includes evacuation shelters, a home of your friend or relatives, or even to a safe location nearby. On the other hand, "Vertical evacuation (Shelter-In-Place)" is the method of moving people away from the area of danger to the upper floor levels. This method includes 2nd and higher floor levels inside your house or building.

### Identify where to evacuate depending on the situation you are currently in

#### Evacuating by moving to a different location (horizontal evacuation)



Evacuate to a home of your friend or relatives outside the flood-prone-areas

Evacuate to a designated evacuation shelter, a home of your friend or relatives or a safe place located in a tall building, if you are inside the flood-prone area

If your current location is in a hazardous area, for example, either near a river, in an area where water level is likely to be high or in an area, where houses could be washed away, you must evacuate to a safe location such as a designated evacuation shelter, your relative's or friend's house before a disaster strikes.

#### Shelter-In-Place (Vertical evacuation)



If it is dangerous to go outside and is difficult to identify hazardous places on your way to an evacuation shelter, or when a flood makes it difficult to walk, then secure your safety and evacuate to the 2nd floor of your house or to a taller building in your neighborhood.

What is a natural disaster?

2 Make an evacuation plan

3 Be prepared for disasters

What is a natural disaster?

2 Make an evacuation plan

3 Be prepared for disasters

# ② Make an evacuation plan

## 2-2. Things to know and action guide to be followed in the case of heavy rains

※The evacuation instructions are issued by municipalities after comprehensive judgment, and therefore, may not be issued even if information equivalent to Alert Level is issued.

Risk level	Small				Great	
Warning Level	Warning Level 1	Warning Level 2	Warning Level 3	Warning Level 4		Warning Level 5
Evacuation information			Evacuation of vulnerable residents	Evacuation order		Take action to protect your life
Actions which you should take	Be prepared for a disaster ● Get the latest weather information. ● Locate the nearest evacuation shelter	Review your evacuation plan ● Review your evacuation plan in this hazard map and be ready to evacuate.	All vulnerable and dependent people evacuate ● Contact your neighbors, and evacuate in a group!	All evacuate from dangerous areas ● Evacuate immediately to a safe area! ● Immediately exit your area and evacuate to a safe area! (Vertical evacuation)		Danger to life; Ensure your safety at once! ● This is a life-threatening situation. Ensure your safety by immediately moving to a room or other space far from the mountain side in a high place on or above the second floor of a building.
Weather information	Level of warnings (Including possibility of the highest-level warning)	Heavy rain advisory Flood advisory	Heavy rain warning and flood warning	Sediment disaster warning information		Special heavy rain warning (Heaviest rain in decades)
KIKIKURU※ (Real-time risk map)		Advisory	Warning	High risk	Severe risk	
Information on river water level		Flood caution information	Flood warning information	Information on potential flood hazards		Information on flooding
Surrounding situation Disaster guide						As heavy rains and storms are particularly abnormal, the risk of a major disaster is remarkably high.
Rainfall		Amount of rainfall per hour 20 to less than 30 mm	Amount of rainfall per hour 30 to less than 50 mm	Amount of rainfall per hour 50 to less than 80 mm	Amount of rainfall per hour 80 mm or more	Information on record-breaking heavy rains in a short period 100 mm or more rainfall per hour

All evacuate at Warning Level 4!

This chart is only to be used as a rough guideline. Depending on the conditions such as the rainfall pattern, the information may not be released in the order shown in the chart.

Collect various types of information. This will help your decision-making processes.

### Information related to strikingly heavy rains

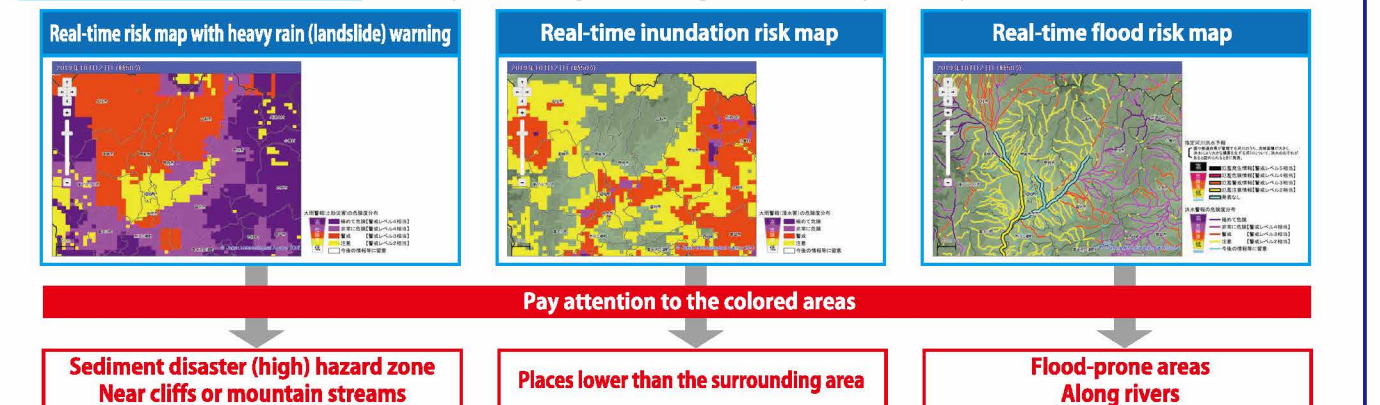
Information related to strikingly heavy rains is the information that explains the situation where extremely violent rains continue to fall in the same place due to a linear rainband, while the risk of a disaster due to heavy rains has drastically increased, using the keyword "linear rainband". This is supplementary information. This information will be announced when a disaster warning level reaches Level 4.

If a violent weather phenomenon potentially leading to a disaster is predicted, the Japan Meteorological Agency announces disaster prevention weather information such as weather warnings and advisories via television, radio and Internet. When information such as warnings and advisories is announced, check the real-time risk map and understand the level of risk for your home.

High	<b>Emergency warning</b>	A state where the risk of a major disaster has remarkably increased
	<b>Sediment disaster warning information</b>	This information will be announced by the Japan Meteorological Agency in collaboration with Yamanashi Prefecture when the risk of a sediment disaster has increased due to a heavy rain.
	<b>Information on record-breaking heavy rains in a short period</b>	This information will be announced when fierce rainfall has been observed and analyzed once every few years (Heavy rain of about 100 mm per hour is predicted in Yamanashi Prefecture)
	<b>Heavy rain warning and flood warning</b>	A state where a major disaster may occur due to heavy rains and floods
Low	<b>Heavy rain advisory and Flood advisory</b>	A state where a disaster may occur due to heavy rains and floods

### KIKIKURU (Real-time risk map)

A real-time risk map is published on the KIKIKURU website with color coding for sediment disasters, inundation and floods which are caused by heavy rains. Predicted high-risk location is colored in purple. Kofu City surrounding areas during Eastern Japan Typhoon (Typhoon no. 19) of 2019



1 What is a natural disaster?

2 Make an evacuation plan

3 Be prepared for disasters

1 What is a natural disaster?

2 Make an evacuation plan

3 Be prepared for disasters

## ② Make an evacuation plan

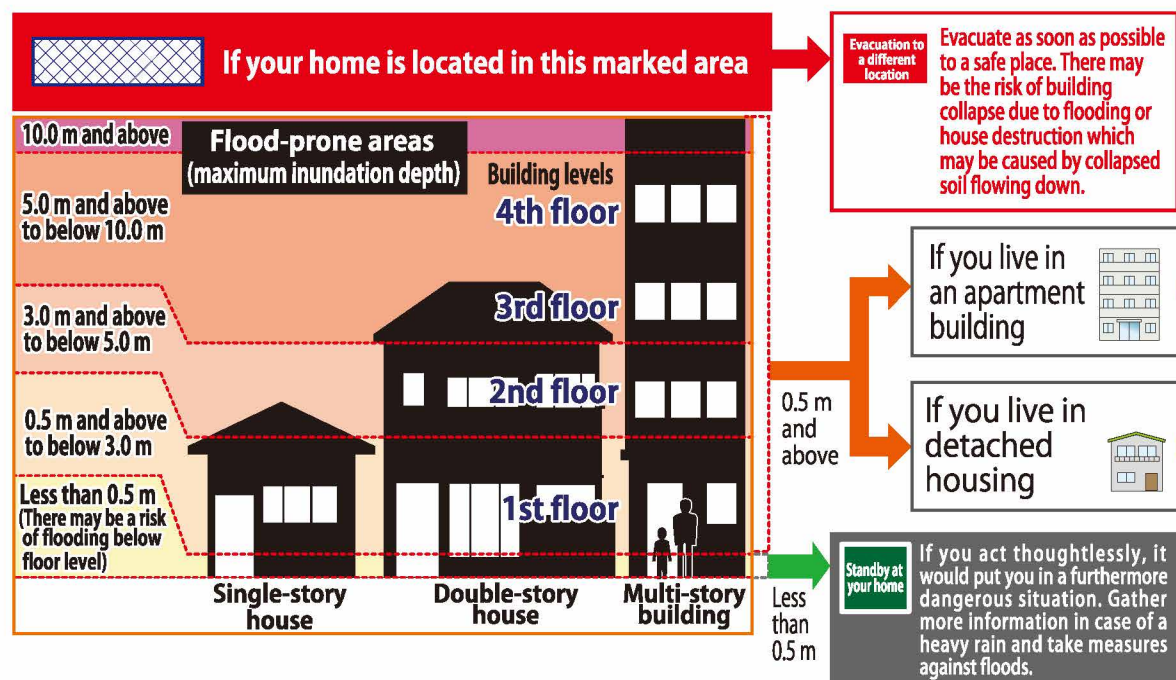
### 2-3. Evacuation decision making and behavioral responses

Check the location of your home on the hazard map as well as the standard actions to be taken during heavy rains from the figure below. The actions to be taken may vary depending on the circumstances such as whether your home is a detached house or an apartment building, how many floors the building has, or whether there are landslide-prone areas nearby. Follow the steps below to check the hazard map, understand the standard actions to be taken by oneself, and if you feel you are in danger, use your judgment to take appropriate actions to save yourself.

Actions to be taken (Legend)	Evacuation to a different location	Vertical evacuation	Standby at your home
	Evacuate to a safe place outside of your house before a river overflows its bank.	Vertically evacuate to the upper floors of buildings depending on the situation.	If you act thoughtlessly, it would put you in a furthermore dangerous situation. Gather more information in case of a heavy rain and take measures against floods.

**Step ①** Find your home on a map pp.13 -30, and see if the surrounding areas are categorized as "Area with a risk of houses being washed away" or "Flood-prone area (maximum inundation depth)".

Is your home located in an area where there is a risk of houses being washed away? What is the color of "flood depth"?



**Things you should know when evacuating**

- ① This hazard map is showing the extent of a worst-case scenario, where rivers overflow their banks.
- ② This guide provides practical guidance and information to help you prepare for an emergency, however, there's no such thing as a perfect evacuation guide for a natural disaster. Take an action to protect your life if needed. Use your common sense.
- ③ Even in the areas where little damage is predicted, you should take an appropriate action if necessary.
- ④ Basically, evacuating to a safe place (Horizontal evacuation) is recommended. However, if you are capable of evacuating to higher floor level of the building in which you are (Vertical evacuation), do so.

### Step ③ Actions which you should take if you live in an apartment

**Apartment building**

Check how many floors your apartment building has, which floor you live on, and what color your area is highlighted on this hazard map. These will help you get an idea what actions to be taken.

※ If you live in an apartment, you could evacuate to common areas such as a hallway.

Number of floors	Floor you live on	Estimated floodwater depth		
		0.5m and above to below 3.0 m (1st floor may be underwater)	3.0 m and above to below 5.0 m (1st and 2nd floors may be underwater)	5.0 m and above (1st, 2nd and 3rd floors may be underwater)
5 stories or more	5th floor and above	Standby at your home	Standby at your home	Standby at your home
	3rd or 4th floor	Standby at your home	Standby at your home	Evacuation to a different location Vertical evacuation
	2nd floor	Standby at your home	Evacuation to a different location Vertical evacuation	Evacuation to a different location Vertical evacuation
	1st floor	Evacuation to a different location Vertical evacuation	Evacuation to a different location Vertical evacuation	Evacuation to a different location Vertical evacuation
3 to 4 stories	3rd and 4th floor	Standby at your home	Standby at your home	Evacuation to a different location
	2nd floor	Standby at your home	Evacuation to a different location Vertical evacuation	Evacuation to a different location
	1st floor	Evacuation to a different location Vertical evacuation	Evacuation to a different location Vertical evacuation	Evacuation to a different location
2 stories	2nd floor	Standby at your home	Evacuation to a different location	Evacuation to a different location
	1st floor	Evacuation to a different location Vertical evacuation	Evacuation to a different location	Evacuation to a different location
1 story	1st floor	Evacuation to a different location	Evacuation to a different location	Evacuation to a different location

### Step ② Actions to take if you live in a house

**Detached housing**

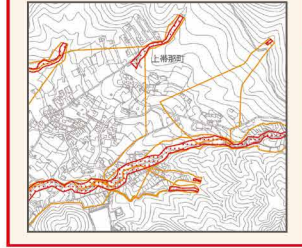
Check how many floors your house has, and what color your area is highlighted on this hazard map. These will help you get an idea what actions to take.

Number of floors	Estimated floodwater depth		
	0.5 m and above to below 3.0 m (1st floor may be underwater)	3.0 m and above to below 5.0 m (1st and 2nd floors may be underwater)	5.0 m and above (1st, 2nd and 3rd floors may be underwater)
3 stories	Evacuation to a different location Vertical evacuation	Evacuation to a different location Vertical evacuation	Evacuation to a different location
2 stories	Evacuation to a different location Vertical evacuation	Evacuation to a different location	Evacuation to a different location
1 story	Evacuation to a different location	Evacuation to a different location	Evacuation to a different location

### Step ④ Evacuation from a sediment disaster

Identify if your home is shown as in a sediment disaster (high) zone on this map.

Landslide high alert issued areas  
 Landslide alert issued areas



**Building material**

**Wood**

**Sturdy building made of reinforced concrete**

**Yes**

**No**

**Standby at your home** If you act thoughtlessly, it would put you in a furthermore dangerous situation. Gather more information in case of a heavy rain and pay attention to sediment information.

**Evacuation to a different location** A sediment disaster may cause houses to collapse. Evacuate to a safe place as soon as possible.

**Evacuation to a different location** Even a sturdy building could have sediment inflow. Evacuate to a safe place as soon as possible.

※ If you are unable to evacuate to a safe place immediately, go to a safe place on a high floor which is located on the opposite side of a mountain.

What is a natural disaster?

2 Make an evacuation plan

3 Be prepared for disasters

What is a natural disaster?

2 Make an evacuation plan

3 Be prepared for disasters

# ② Make an evacuation plan

## 2-4. How to read this hazard map

From pages 13 to 30, large-scale maps are used to introduce the flood hazard maps for Kofu City.

### ① Find your location in the following maps

Find your home, workplace or school from Block 1 to 9. Open the relevant page.

### ② Check whether the area is colored or marked

Once you have checked your current location, check what color your location is highlighted.

### ③ Check which warning category your location falls

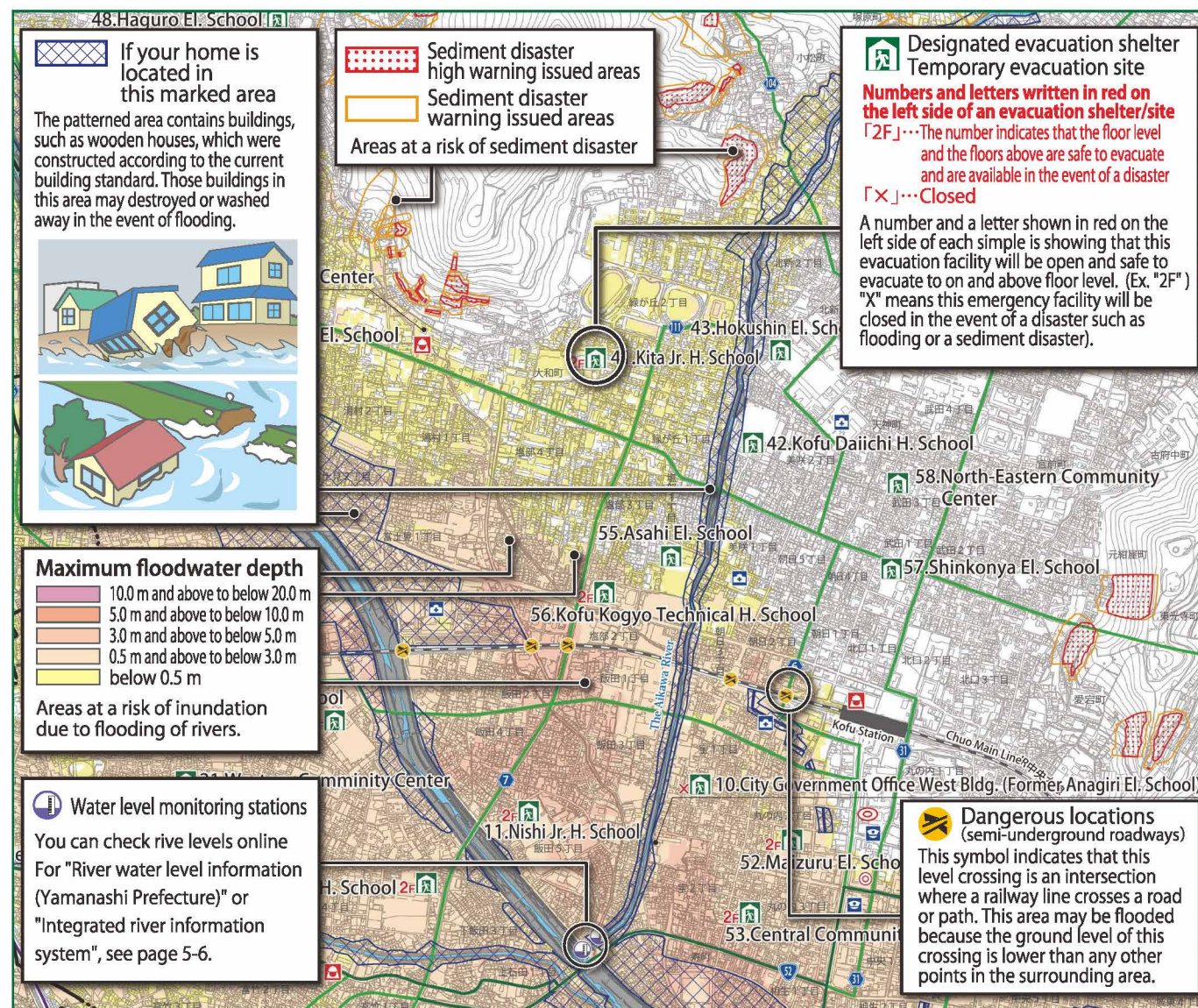
If the location of your house is colored or marked with a colored line, compare the color with the legend, and check which area the location is designated in.

### ④ Locate a nearby evacuation site or shelter

Identify the locations of the nearest "Designated evacuation shelter" or "Temporary evacuation site".

### ⑤ Check your evacuation routes

Identify evacuation routes from your home to the "designated evacuation shelter" or the "temporary evacuation site" on this map. Consider avoiding a route which includes high flood depth predicted areas and sediment disaster (high) warning issued areas.



## Kofu City evacuation shelters and temporary evacuation sites

### Designated evacuation shelters

Block	No.	Name/Address	Availability		Block	No.	Name/Address	Availability	
			"2F"...	Facility whose 2nd, and higher floors can be used				"X"...	Closed
			Flood	Sediment disasters				Flood	Sediment disasters
East Block	1	Higashi El. School Asake 1-14-1	2F	○	South Block	31	Yamashiro El. School Kamiimai cho 474-2	2F	○
	2	Satogaki El. School Zenkoji 2-7-1	○	○		32	Environmental Center Admin. Bldg. Kami cho 601-4	2F	○
	3	Kaede Special Needs School Tokoji 2-25-1	○	○		33	Southern Community Center Shimoimai cho 15	X	○
	4	Kofu Higashi H. School Sakaori 1-17-1	2F	○		34	Osato El. School Osato machi 3785-2	2F	○
	5	Koun El. School Kawada machi 65-2	2F	○		35	Jonan Jr. H. School Osato machi 2590-1	X	○
	6	Eastern Community Center Wado machi 955-1	○	○		36	Nakamichi Minami El. School Shimomukoyama cho 4366	○	○
	7	Tamamoro El. School Kamiahara machi 491	2F	○		37	Nakamichi Kita El. School Kamisono cho 3368-36	X	○
	8	Yamanashi Municipal Association Bldg. Yomogisawa 1-15-35	2F	○		38	Tekinan Jr. H. School Shimosone cho 270	X	○
	9	Zenyukan El. School Asake 1-2-52	2F	○		39	Nakamichi Sports Field Gymnasium Shimomukoyama cho 946	○	○
West Block	10	City Government Office West Bldg. (Former Anagiri El. School) Takara 2-8-19	X	○	40	Kamikuishiki Branch Office Furuseki machi 1158	○	○	
	11	Nishi Jr. H. School Iida 5-13-1	2F	○	North Block	41	Kita Jr. H. School Daiwa cho 4-35	2F	○
	12	Ishida El. School Kamiishida 3-6-31	2F	○		42	Kofu Daiichi H. School Misaki 2-13-44	○	○
	13	Nansei Jr. H. School Kamiishida 4-10-8	2F	○		43	Hokushin El. School Kitashin 1-5-1	○	○
	14	Ikeda El. School Choshoji cho 7-1	2F	○		44	Aikawa El. School Kofuchu cho 1501	○	○
	15	Kofu Josai H. School Shimoaida 1-9-1	2F	○		45	Hokuto Jr. H. School Oote 2-4-18	○	○
	16	Kofu Nishi H. School Shimoaida 4-1-1	2F	○		46	Chizuka El. School Chizuka 1-2-16	2F	○
	17	Shinden El. School ※1 Shinden cho 12-28	2F	○		47	Northern Community Center Yumura 3-5-20	2F	○
	18	Tomitake Jr. H. School Tomitake 4-5-8	2F	○		48	Haguro El. School Haguro cho 527	○	○
	19	Kugawa Welfare Center Tokugyo 3-12-1	2F	○		49	Yamamiya Welfare Center Yamamiya cho 383-1	○	○
	20	Kugawa El. School Kugawa Honcho 8-1	2F	○		50	Hokusei Jr. H. School Yamamiya cho 538	X	○
21	Western Community Center Choshoji cho 12-30	2F	○	51		Chiyoda El. School Shimoobina cho 3034-2	○	○	
South Block	22	Yuda El. School Yuda 1-8-1	2F	○	Central Block	52	Maizuru El. School Marunouchi 2-35-5	2F	○
	23	Ise El. School Ise 2-16-1	2F	○		53	Central Community Center Marunouchi 3-26-16	2F	○
	24	Minami Jr. H. School Yuda 2-21-24	2F	○		54	Fujikawa Yuyu kan Chuo 3-3-1	○	○
	25	Kokubo El. School Kokubo 4-1-10	2F	○		55	Asahi El. School ※1 Shiobe 1-4-1	○	○
	26	South-Western Community Center Kokubo 6-4-2	2F	○		56	Kofu Kogyo Technical H. School Shiobe 2-7-1	2F	○
	27	Okuni El. School Ushiroya cho 150	2F	○		57	Shinkonya El. School Takeda 1-3-34	○	○
	28	Kamijo Jr. H. School Furukamijo machi 95	2F	○		58	North-Eastern Community Center Takeda 3-1-6	○	○
	29	Kofu Shogyo Commercial H. School Kamiimai cho 300	2F	○		59	City Government Office South Bldg. (Former Aioi El. School) Aioi 2-17-1	2F	○
	30	Kofu Minami H. School Nakakogawara 222	2F	○		60	City Government Office South Bldg Annex (Former Jichikenshu Center) Aioi 1-9-7	X	○

※1 During flooding, South building of Shinden Elementary School and the gym and East building of Asahi Elementary School will be closed.

※2 The usable areas are designated by comparing the situations of various facilities such as flood depth, through the superimposition of the flood-prone areas during maximum potential rainfall in the 10 rivers (The Fuefuki River, The Kamanashi River, The Arakawa River, The Aikawa River, The Nigori River, The Byodo River, The Takido River, The Sakai River, The Kamata River and The Kugawa River) that impact Kofu City. As such, if individual rivers flood, the usable sections will be different from those mentioned above.

※3 As these usable areas cannot fully guarantee safety, prioritize evacuation outside flood-prone areas and landslide alert issued areas when taking evacuation measures depending on the situation during actual disaster conditions.

### Temporary evacuation sites

Name	Address
Kai City Kissawa Regional Fureaikan	233-2 Kissawa, Kai City
Arakawa Dam Memorial Hall	Kawakubo-cho 583

What is a natural disaster?

2 Make an evacuation plan

3 Be prepared for disasters

What is a natural disaster?

2 Make an evacuation plan

3 Be prepared for disasters