

2-5. Flood hazard maps

1 South Block (Nakamichi/Kamikuishiki)

Maximum floodwater depth  
 10.0 m and above to below 20.0 m (Not applicable)  
 5.0 m and above to below 10.0 m  
 3.0 m and above to below 5.0 m  
 0.5 m and above to below 3.0 m  
 below 0.5 m

If your home is located in this marked area  
 Sediment disaster high warning  
 Sediment disaster warning

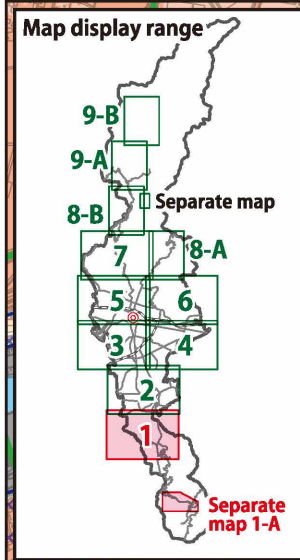
Dangerous locations (semi-underground roadways)

Designated evacuation shelter  
 Temporary evacuation site

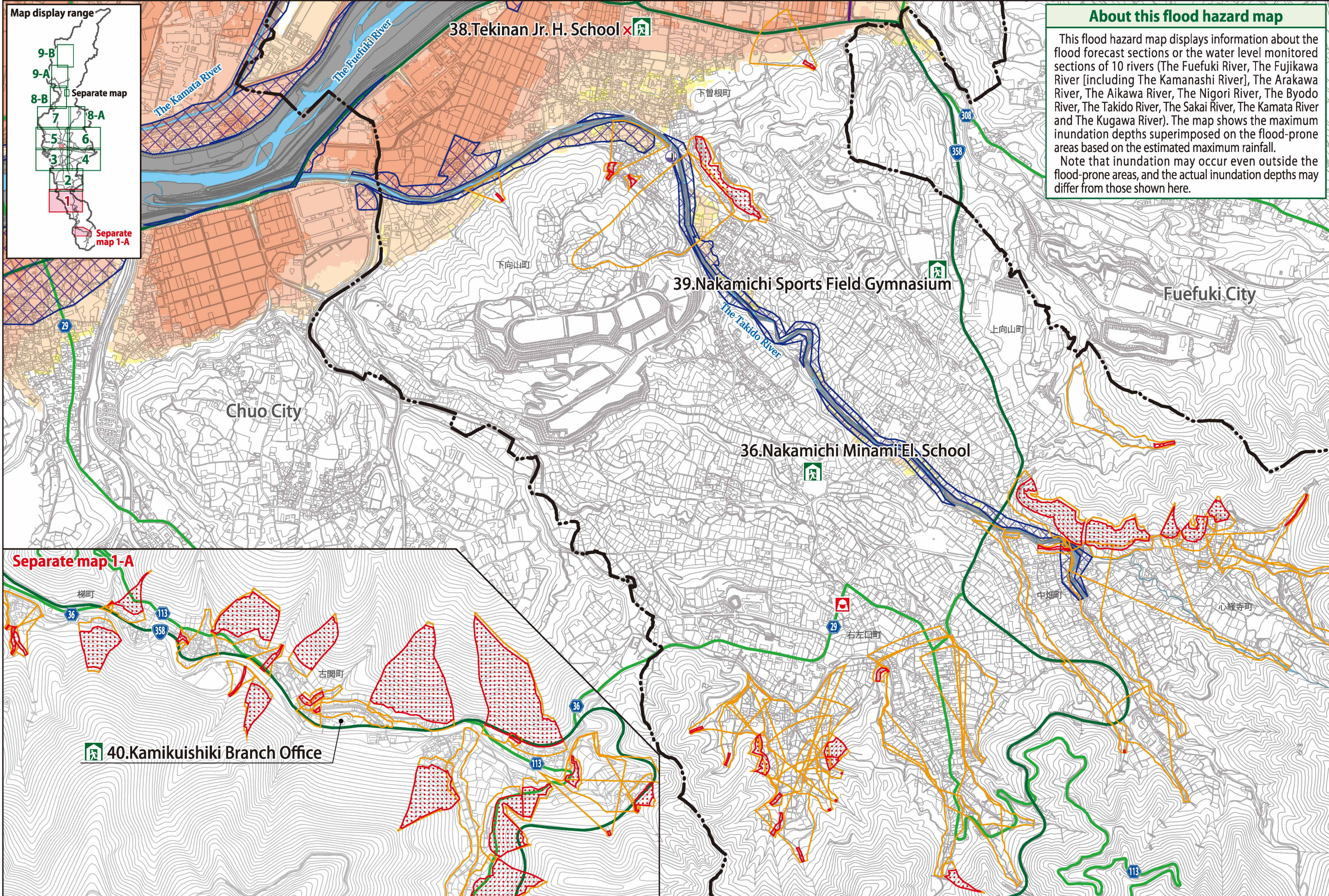
Medical facilities (disaster base hospitals and disaster medical assistance hospitals)  
 Police department  
 Fire department

City hall and branch offices  
 Water level monitoring stations

Numbers and letters written in red on the left side of an evacuation shelter/site "2F"---The number indicates that the floor level and the floors above are safe to evacuate and are available in the event of a disaster  
 "X"---Closed

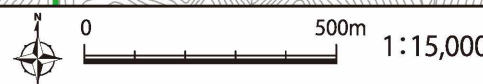


**About this flood hazard map**  
 This flood hazard map displays information about the flood forecast sections or the water level monitored sections of 10 rivers (The Fuefuki River, The Fujikawa River [including The Kamanashi River], The Arakawa River, The Aikawa River, The Nigori River, The Byodo River, The Takido River, The Sakai River, The Kamata River and The Kugawa River). The map shows the maximum inundation depths superimposed on the flood-prone areas based on the estimated maximum rainfall.  
 Note that inundation may occur even outside the flood-prone areas, and the actual inundation depths may differ from those shown here.



Separate map 1-A

この地図の作成に当たっては、中央市長の承認を得て、中央市発行の縮尺1万分の1中央市全図を使用した。(承認番号 中央都第11-2号)  
 この地図は、笛吹市長の承認を得て同市発行の縮尺10,000分の1の都市計画基本図を使用し、作成したものである。(令和3年11月4日 笛まち第11-2号)



1 What is a natural disaster?

2 Make an evacuation plan

3 Be prepared for disasters

1 What is a natural disaster?

2 Make an evacuation plan

3 Be prepared for disasters