

2-5. Flood hazard maps

3 East, West, South, and Central Blocks

- Maximum floodwater depth**
- 10.0 m and above to below 20.0 m (Not applicable)
 - 5.0 m and above to below 10.0 m
 - 3.0 m and above to below 5.0 m
 - 0.5 m and above to below 3.0 m
 - below 0.5 m

- If your home is located in this marked area
- Sediment disaster high warning (Not applicable)
- Sediment disaster warning (Not applicable)

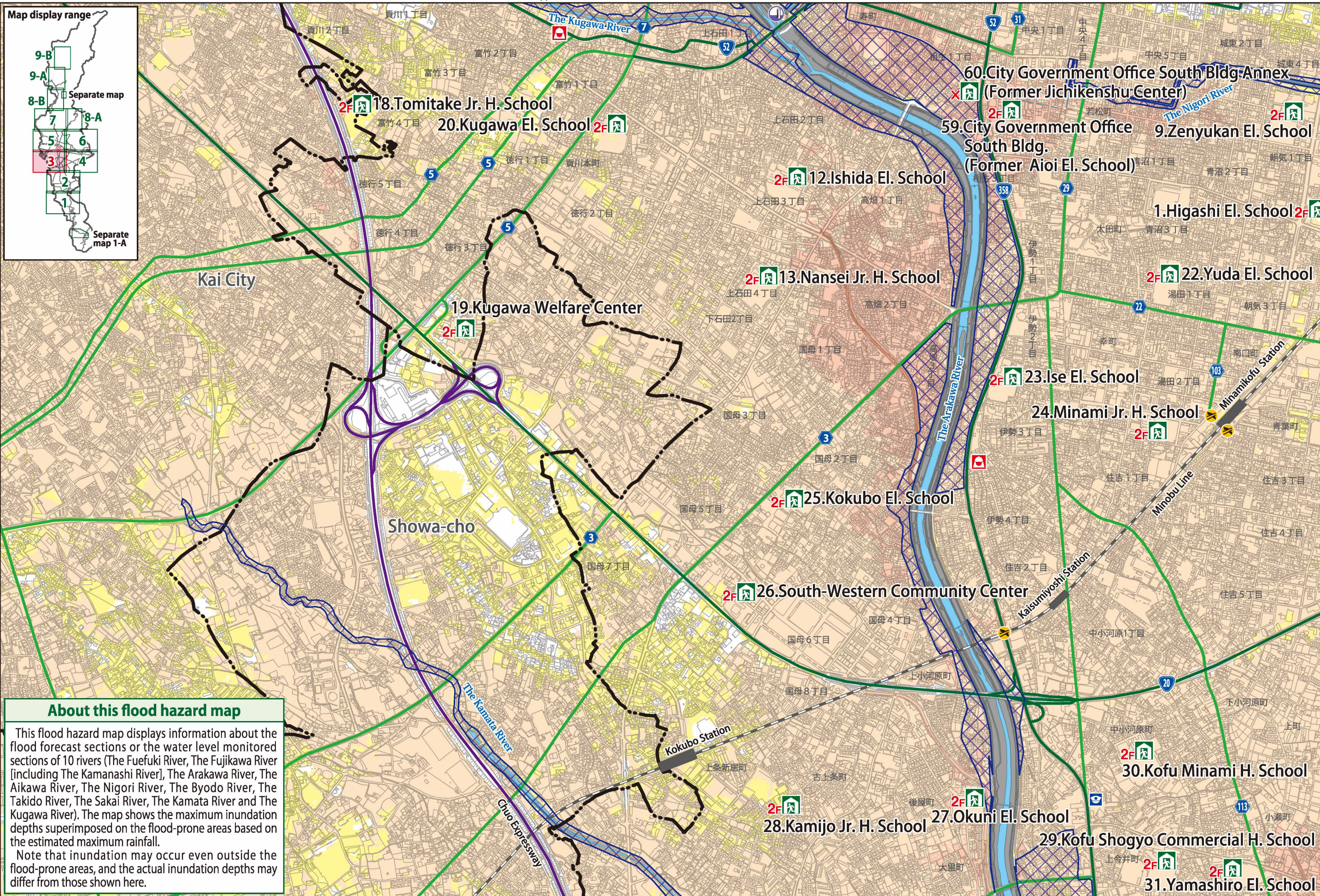
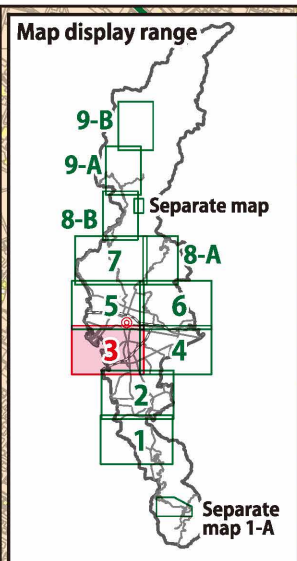
Dangerous locations (semi-underground roadways)

Designated evacuation shelter
Temporary evacuation site

- Medical facilities (disaster base hospitals and disaster medical assistance hospitals)
- Police department
- Fire department

- City hall and branch offices
- Water level monitoring stations

Numbers and letters written in red on the left side of an evacuation shelter/site
"2F"---The number indicates that the floor level and the floors above are safe to evacuate and are available in the event of a disaster
"X"---Closed



About this flood hazard map

This flood hazard map displays information about the flood forecast sections or the water level monitored sections of 10 rivers (The Fuefuki River, The Fujikawa River [including The Kamanashi River], The Arakawa River, The Aikawa River, The Nigori River, The Byodo River, The Takido River, The Sakai River, The Kamata River and The Kugawa River). The map shows the maximum inundation depths superimposed on the flood-prone areas based on the estimated maximum rainfall.

Note that inundation may occur even outside the flood-prone areas, and the actual inundation depths may differ from those shown here.

この地図は、甲斐市長の承認を得て同市発行の甲斐市都市計画基本図(縮尺1/2,500)を使用し、作成したものである。(甲斐都第10-70号)
この地図の作成に当たっては、昭和町長の承認を得て、同町発行の10,000分の1図を使用したものである。(承認番号 令和3年11月2日 昭都第159号)



1 What is a natural disaster?

2 Make an evacuation plan

3 Be prepared for disasters

1 What is a natural disaster?

2 Make an evacuation plan

3 Be prepared for disasters