

6 East and North Blocks

Maximum floodwater depth
 10.0 m and above to below 20.0 m (Not applicable)
 5.0 m and above to below 10.0 m (Not applicable)
 3.0 m and above to below 5.0 m
 0.5 m and above to below 3.0 m
 below 0.5 m

If your home is located in this marked area
 Sediment disaster high warning
 Sediment disaster warning

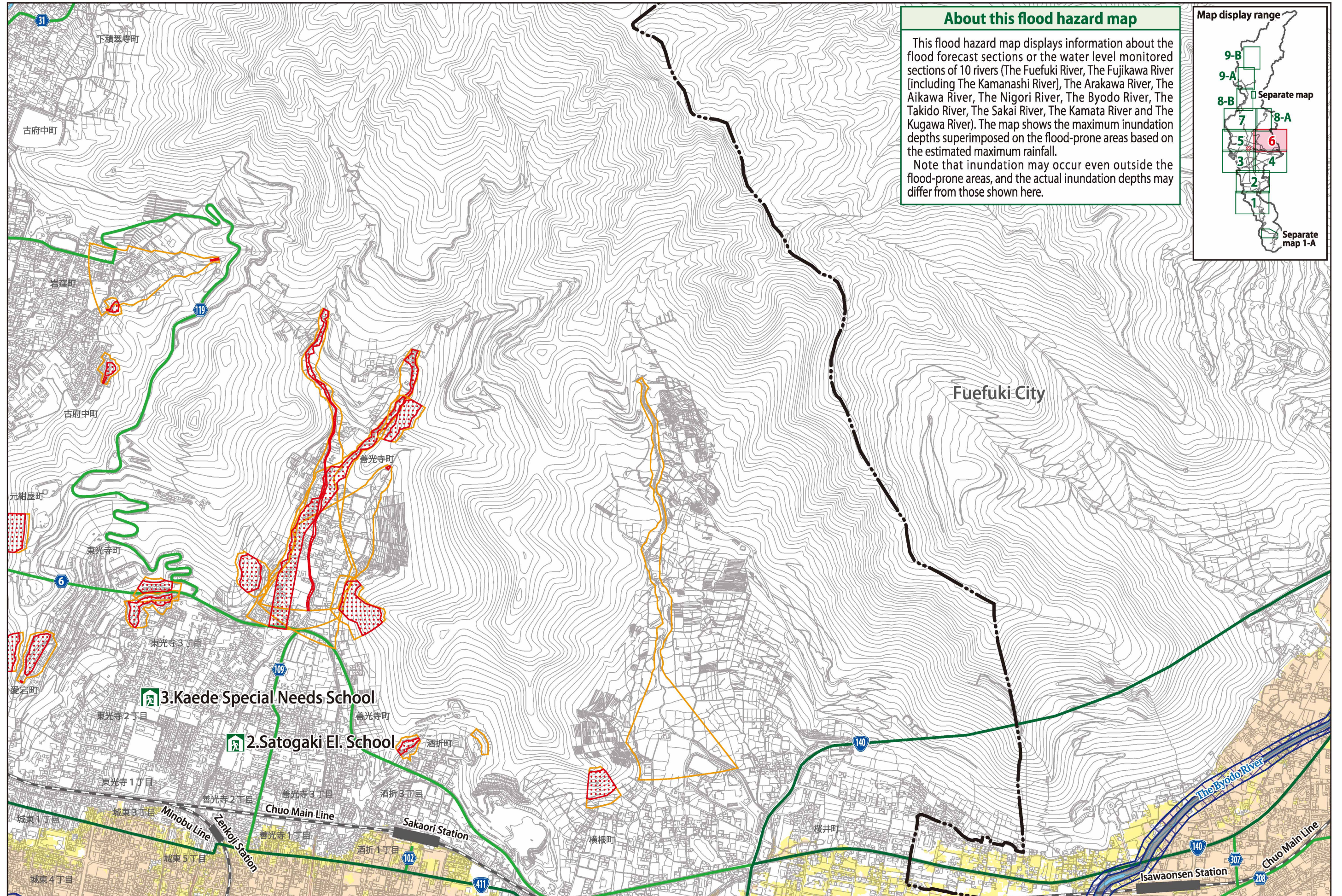
Dangerous locations (semi-underground roadways)

Designated evacuation shelter
 Temporary evacuation site

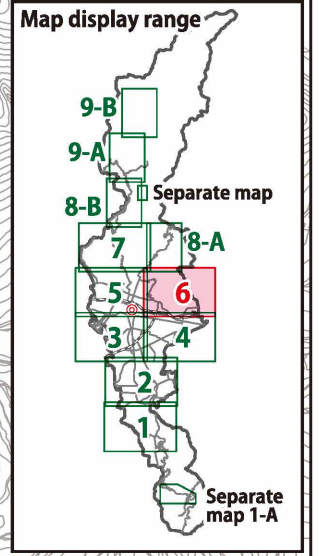
Medical facilities (disaster base hospitals and disaster medical assistance hospitals)
 Police department
 Fire department

City hall and branch offices
 Water level monitoring stations

Numbers and letters written in red on the left side of an evacuation shelter/site "2F"---The number indicates that the floor level and the floors above are safe to evacuate and are available in the event of a disaster
 "X"---Closed



About this flood hazard map
 This flood hazard map displays information about the flood forecast sections or the water level monitored sections of 10 rivers (The Fuefuki River, The Fujikawa River [including The Kamanashi River], The Arakawa River, The Aikawa River, The Nigori River, The Byodo River, The Takido River, The Sakai River, The Kamata River and The Kugawa River). The map shows the maximum inundation depths superimposed on the flood-prone areas based on the estimated maximum rainfall.
 Note that inundation may occur even outside the flood-prone areas, and the actual inundation depths may differ from those shown here.



この地図は、笛吹市長の承認を得て同市発行の縮尺10,000分の1の都市計画基本図を使用し、作成したものである。(令和3年11月4日笛まち第11-2号)

1 What is a natural disaster?

2 Make an evacuation plan

3 Be prepared for disasters

1 What is a natural disaster?

2 Make an evacuation plan

3 Be prepared for disasters