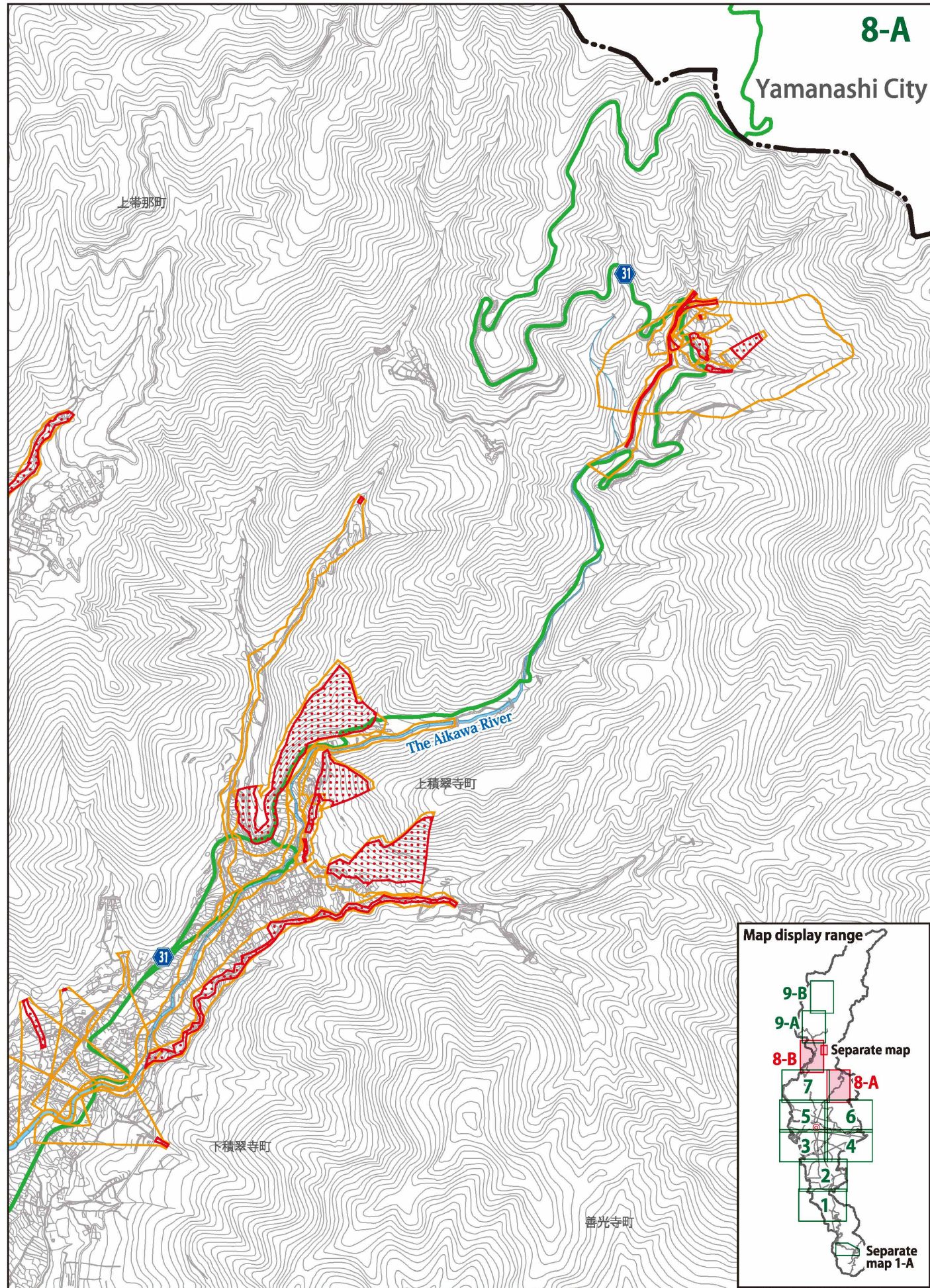


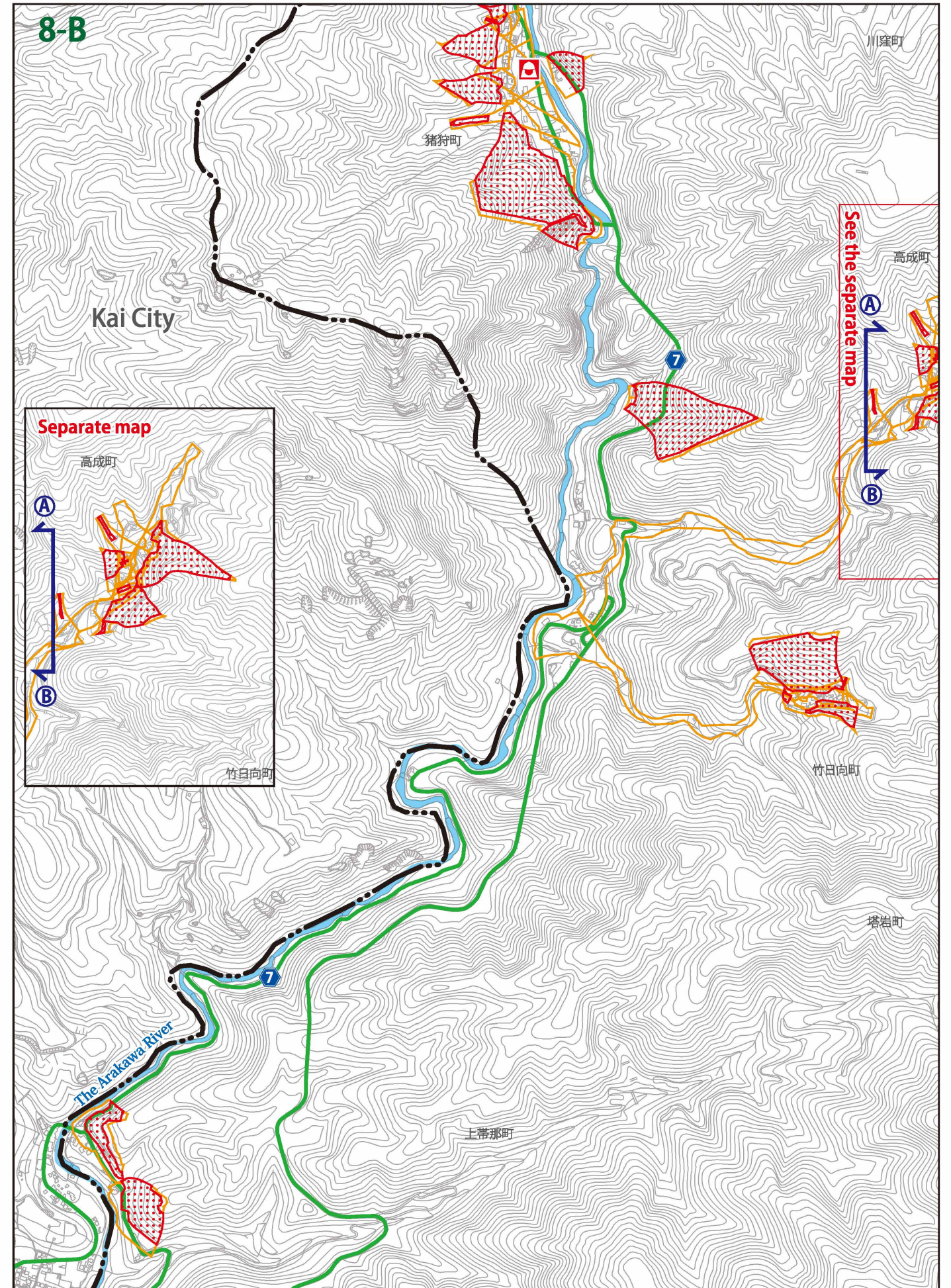
8 North Block②

- Maximum floodwater depth (Not applicable)
  - 10.0 m and above to below 20.0 m
  - 5.0 m and above to below 10.0 m
  - 3.0 m and above to below 5.0 m
  - 0.5 m and above to below 3.0 m
  - below 0.5 m
- If your home is located in this marked area (Not applicable)
- Sediment disaster high warning
- Sediment disaster warning



この地図は、甲斐市長の承認を得て同市発行の甲斐市都市計画基本図（縮尺 1/2,500）を使用し、作成したものである。（甲斐市第 10-70 号）

- Dangerous locations (semi-underground roadways)
  - Designated evacuation shelter Temporary evacuation site
  - Medical facilities (disaster base hospitals and disaster medical assistance hospitals)
  - Police department
  - Fire department
  - City hall and branch offices
  - Water level monitoring stations
- Numbers and letters written in red on the left side of an evacuation shelter/site "2F"---The number indicates that the floor level and the floors above are safe to evacuate and are available in the event of a disaster  
"X"---Closed



0 500m 1:15,000

1 What is a natural disaster?

2 Make an evacuation plan

3 Be prepared for disasters

1 What is a natural disaster?

2 Make an evacuation plan

3 Be prepared for disasters