

9 North Block③

- Maximum floodwater depth (Not applicable)
 - 10.0 m and above to below 20.0 m
 - 5.0 m and above to below 10.0 m
 - 3.0 m and above to below 5.0 m
 - 0.5 m and above to below 3.0 m
 - below 0.5 m
- If your home is located in this marked area (Not applicable)
- Sediment disaster high warning
- Sediment disaster warning

Dangerous locations (semi-underground roadways)

Designated evacuation shelter Temporary evacuation site

Medical facilities (disaster base hospitals and disaster medical assistance hospitals)

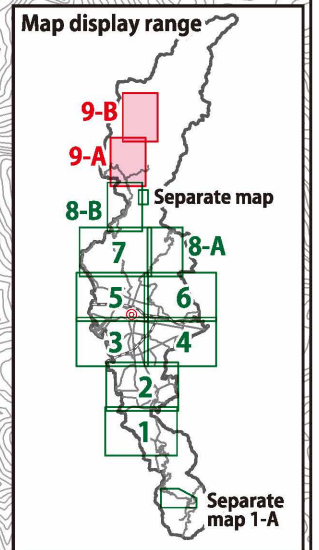
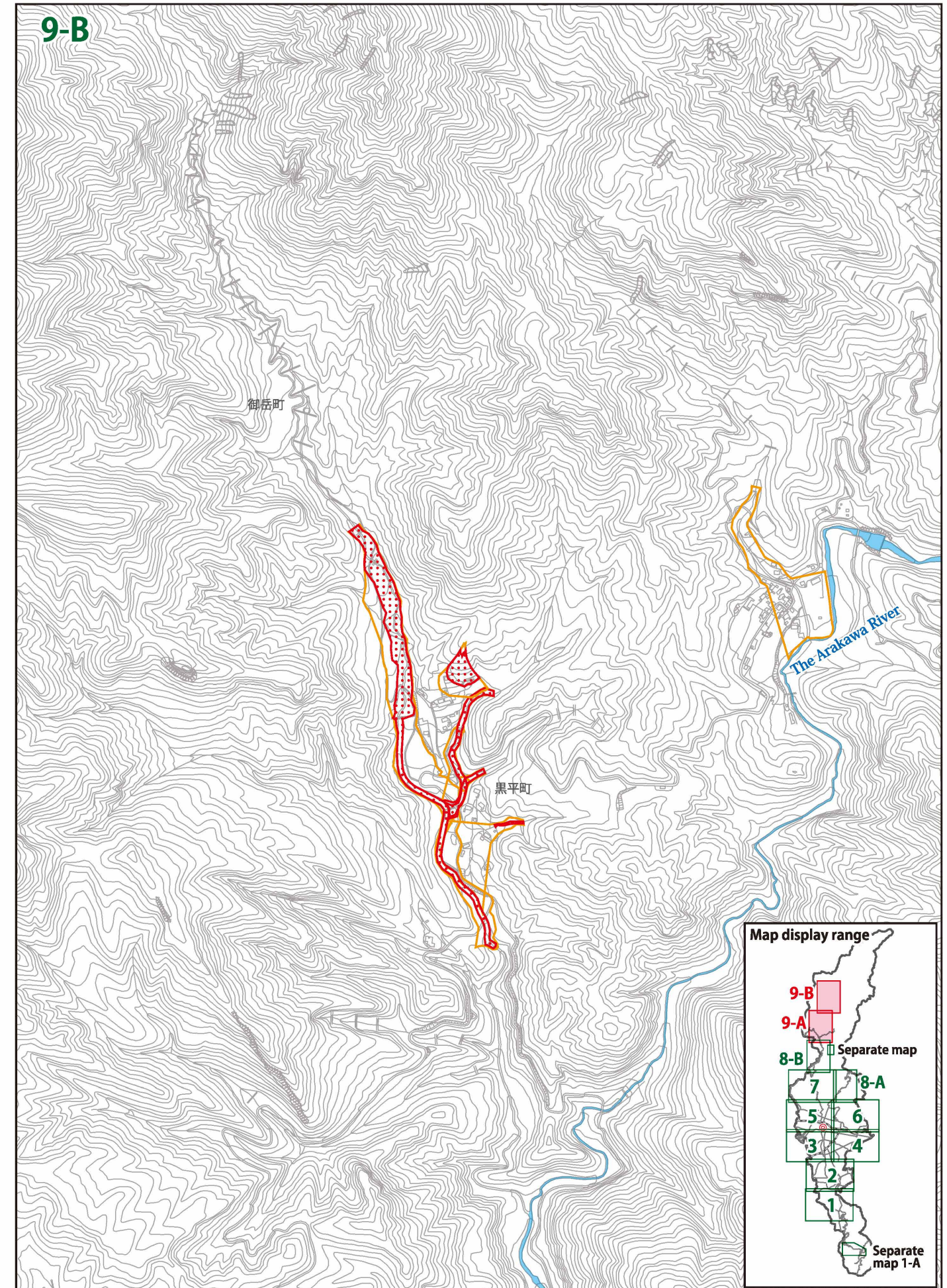
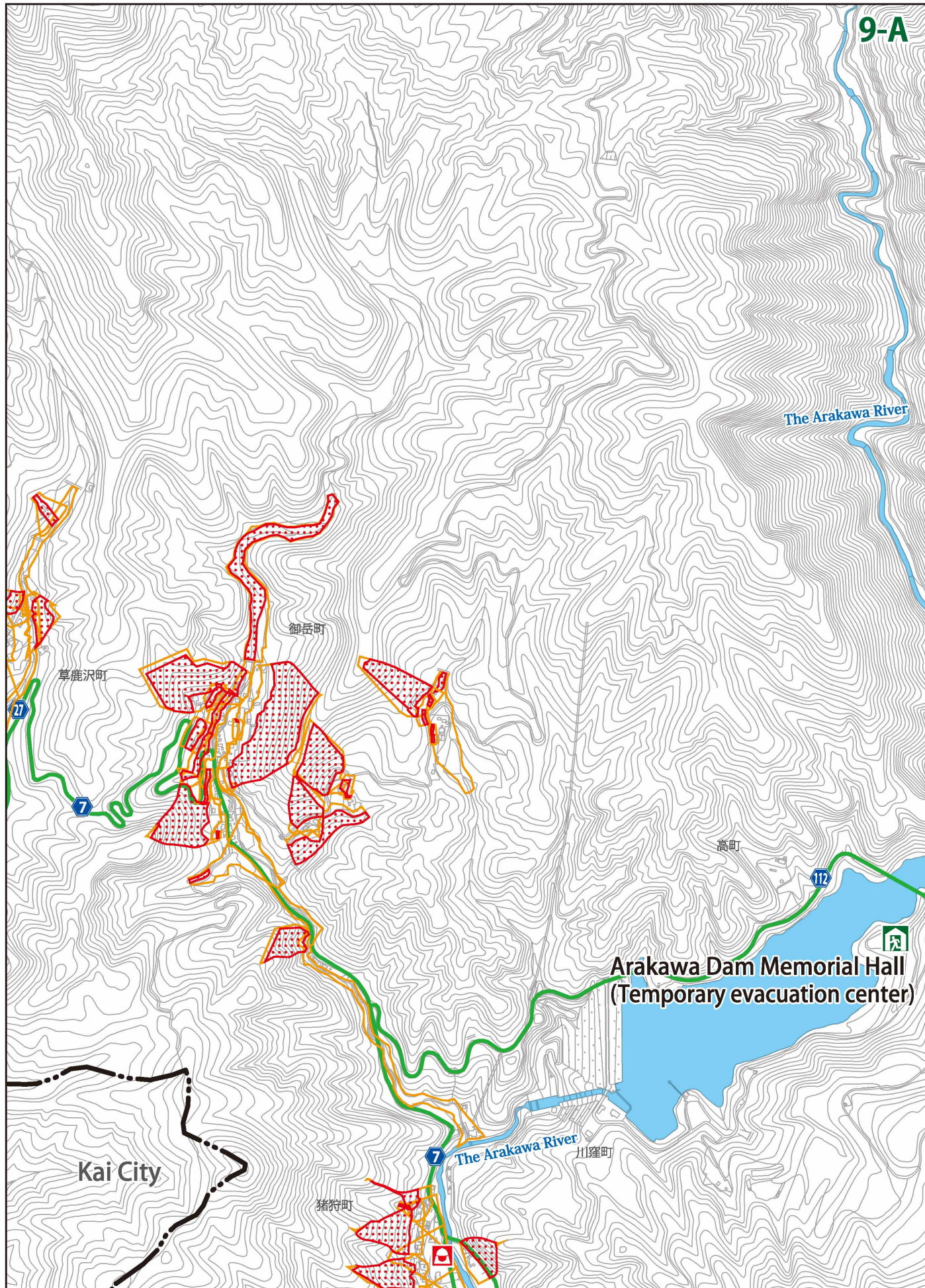
City hall and branch offices

Police department

Water level monitoring stations

Fire department

Numbers and letters written in red on the left side of an evacuation shelter/site "2F"---The number indicates that the floor level and the floors above are safe to evacuate and are available in the event of a disaster "X"---Closed



この地図は、甲斐市長の承認を得て同市発行の甲斐市都市計画基本図(縮尺 1/2,500)を使用し、作成したものである。(甲斐都第 10-70 号)



1 What is a natural disaster?

2 Make an evacuation plan

3 Be prepared for disasters

1 What is a natural disaster?

2 Make an evacuation plan

3 Be prepared for disasters