

# Gather information and stay prepared!

In the event of a disaster, you should know how to keep up to date with the latest information! During emergencies, the city will provide important information through a variety of channels.

## Stay up to date by listening to the government emergency radio system

The radio system routinely broadcasts weather advisories and requests for help in locating missing persons. In the event of a disaster, the government emergency radio system will provide important information to all citizens. Broadcasts from the government emergency radio system are distributed via newsletter, the Kofu City Disaster Prevention App, and the Disaster Prevention Portal.



### Government Emergency Radio Telephone Service

You can double check the contents of the broadcasts made via the government emergency radio system by phone. Please use this service if you cannot hear the broadcast or want to review the content again.

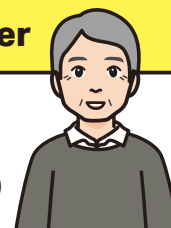
 **055-298-4471**

● Call charges apply

● Content will not be available after 24 hours has passed since broadcast

## Kofu City Disaster and Crime Prevention e-Newsletter

Government emergency radio system broadcasts and various disaster-related information are also be provided via an e-newsletter sent to cell phones and smartphones. Why not sign up now? (An email address is required to register for this service)



### Register via a computer

Kofu City Homepage

Disaster and Crime Prevention

Means of Information Transmission

Kofu City Disaster and Crime Prevention  
e-Newsletter

Register your email address using  
the subscription form  
(Available in Japanese only)

You will receive a confirmation email  
after temporary registration

Register your email address again using  
the confirmation email URL  
to confirm your subscription

### Register via a cell phone or smartphone

Send a blank email to:  
[city-kofu@cousmail-entry.cous.jp](mailto:city-kofu@cousmail-entry.cous.jp)

You can also scan and send an email  
by using the QR code on the right



After sending the blank email,  
you will receive a confirmation email

Access the URL in the confirmation  
email within 30 minutes,  
check 'Kofu City Disaster Prevention  
and Crime Prevention e-Newsletter'  
and select the 'Confirm' button

Select the 'Register' button to  
complete registration

If you have a spam mail filtering function, please set it so  
that you can receive emails from the following domain.  
[mlmaster@info.cous.jp](mailto:mlmaster@info.cous.jp)

## Getting information via the Kofu City website and app

Disaster preparedness and crime prevention information is posted on the Kofu City website on a daily basis. In the event of a disaster, relevant information will be posted in a prominent location on the homepage and disaster information will be provided as needed.



Register the homepage to your computer's 'Favorites' or 'Bookmark' it on your smartphone in case of emergency.

Kofu City Official Homepage  
<https://www.city.kofu.yamanashi.jp/index.html>



### Kofu City Disaster Prevention Portal

This website provides real-time information on disaster preparedness, such as evacuation information and information on the opening of evacuation shelters.



<https://kofu-city.my.salesforce-sites.com/>

### Kofu City Disaster Prevention App

Try to make use of this service not only in times of disaster, but also on a regular basis to educate yourself on disaster preparedness.



<https://www.city.kofu.yamanashi.jp/bosaitaisaku/bousaiapuri.html>

### Kofu City Official X (formerly Twitter), Facebook

Register to automatically receive information posted on the city website! The links are accessible from the city website.



Kofu City Official Facebook Page



Kofu City Official X Account

Tourist information and other news is also regularly posted on the city website.



- X Account is a registered trademark of Twitter, Inc. in the United States and other countries.
- Facebook is a registered trademark of Facebook, Inc.

# Prepare by communicating with others!

Talk to your family and neighbors about disaster preparedness on a regular basis, and think about how you can support vulnerable residents, such as the elderly and people with disabilities.

## Have a family meeting!

Decide how you will confirm your safety, where to meet, and what roles your family members will play in the event of an emergency.

- Decide how you will confirm safety with family and acquaintances and where you will evacuate to
- Prepare emergency supplies and decide who is in charge of retrieving them in the event of a disaster
- Decide who will carry out initial fire extinguishing
- Decide who will be in charge of turning off the main circuit breaker
- Decide who will turn off the gas
- Decide who will shut the doors and windows

In addition to this, make sure that your family members know what other precautions to take in the event of a disaster.



### Check how to contact schools, etc.!

Confirm in advance how to communicate with your child's kindergarten, nursery school, elementary, junior/senior high school, etc. in the event of a disaster.

## How to confirm you and your loved ones are safe during a disaster



The Disaster Emergency Message Dial service is provided by NTT East and NTT West, as well as by cell phone companies in the event of a disaster. For more information, please access the website homepage on your cellphone. \* Trial days are available on the 1st, 15th, and other dates of each month.

## Walk to the evacuation shelter to check the location, distance and time needed to evacuate

In order to be able to quickly evacuate to an evacuation shelter in the event of an emergency, take regular walks to confirm the location, distance, and time required to get there, while also experiencing the differences in weather and day/night conditions.

**Watch the video!**  
**Recommendations for shelter walks**

\*Access may not be possible depending on the type of device.



## Join in local disaster preparedness activities!

When a large-scale disaster occurs, local residents need to work together and cooperate, taking smart action to mitigate any damage. Local voluntary disaster prevention organizations work to prevent and reduce damage caused by disasters in the spirit of "protecting our local communities with our own hands". Try to participate in the disaster preparedness activities of voluntary disaster prevention organizations on a day-to-day basis.

On the second Sunday in November, Kofu City also holds a Comprehensive Disaster Prevention Drill. Evacuation drills, initial fire extinguishing drills, emergency food preparation drills, and evacuation shelter operation drills will be held at venues in each community, so be sure to attend and educate yourself!



### Kofu City Disaster Prevention Leaders

Kofu City Disaster Prevention Leaders are volunteers who are committed to ensuring a disaster-resilient city. They must complete the "Disaster Prevention Leader Guidance and Training Workshop" after. The purpose of the program is to contribute to the development of local voluntary disaster prevention organizations. The program also strives to share knowledge and skills. In the event of a disaster, Disaster Prevention Leaders aid in supporting the emergency response.



## Let's support those in need!

Those in need of assistance include the elderly, people with disabilities, expectant mothers, infants, foreign nationals, etc. Vulnerable residents may have many concerns, such as how to gather disaster information and evacuate. Try to regularly talk to the people in your neighborhood who you think may need assistance and help them evacuate in the event of an emergency. The city has prepared a list of people who need special evacuation support.

### There are two types of evacuation support lists.

- ① List of persons who have preemptively provided their information to voluntary disaster prevention organizations, etc.
- ② List of names to be provided to voluntary disaster prevention organizations, etc. in the event of a disaster in accordance with laws and regulations, regardless of whether or not the persons on the list have given their consent

#### List of persons requiring assistance for evacuation

##### People who have preemptively provided their information

Regularly distribute lists to voluntary disaster prevention organizations, etc.

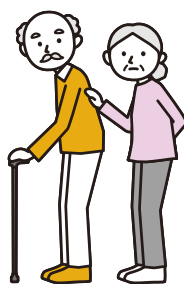
##### Those who do not consent to providing their information, or those who do not respond

Regardless of whether or not consent has been obtained, in the event of a disaster, information on the list will be shared if necessary, in order to provide appropriate evacuation assistance or other support.

Share the list of those who have agreed to provide their information with voluntary disaster prevention organizations, and use it to examine evacuation support methods, prepare equipment and materials necessary for support, and conduct local disaster prevention drills, etc.



Physically handicapped



Elderly



Foreign  
nationals



Expectant  
mothers



Children

# Prepare an emergency kit and stockpile!



Prepare an emergency kit that can be easily retrieved in case of evacuation. During a disaster, store supplies may sell out quickly, so it is important to prepare a stockpile in advance. Be sure to check the contents regularly!



Evacuate with a backpack or a bag that still allows you to use both hands.

## Emergency supplies (example)

- ☐ Drinking water (500 ml x two bottles per family member)
  - ☐ Ready-to-eat meals (emergency rations that do not require cooking x three meals per family member) (cooked dry packed rice, biscuits, chocolate, nutritional supplements, etc.)
  - ☐ Toilet paper, tissues, wet wipes
  - ☐ Portable radio
  - ☐ Flashlight
  - ☐ Batteries and mobile phone battery chargers
  - ☐ Large and small plastic bags
  - ☐ Towels, underwear (preferably disposable), socks
  - ☐ Disposable heat packs
  - ☐ Notepad, pen, copy of health insurance card
  - ☐ Cash (including small change)
  - ☐ Utility knife
  - ☐ Saran wrap
  - ☐ Toothbrush
  - ☐ Masks, adhesive plasters
  - ☐ Picnic blanket
  - ☐ Plastic cups and paper plates
  - ☐ Foldable umbrella, raincoat
- (If necessary)
- ☐ Prescription/daily medications
  - ☐ Prescription record book
  - ☐ Diapers, baby food, baby milk sachets
  - ☐ Sanitary products
  - ☐ Dentures, contact lenses, glasses
  - ☐ Infection prevention measures (masks, thermometer, etc.)



Make sure you know where your emergency kit is stored so that you can retrieve it quickly in case of emergency.

- ☐ Driver's license
- ☐ Health insurance card
- ☐ Prescription record book
- ☐ Pension book
- ☐ Personal name stamp
- ☐ Photos of family members
- ☐ Bank book



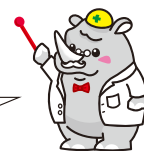
### Clothing for evacuation (example)

Try to keep evacuation clothes near the front door of your house.

- ☐ Helmet or disaster hood
- ☐ Comfortable clothing
- ☐ Flat and comfortable footwear
- ☐ Gloves
- ☐ Whistle







## Stockpile (example)

Prepare a **seven-day supply** of what you will need if you shelter at home

### Food

- ☐ **Drinking water**  
(three liters per day per person x seven days' worth)
- ☐ **Staple foods**  
(pre-cooked rice, noodles, rice cakes, etc.)
- ☐ **Main dishes** (boil-in-the-bag food)
- ☐ **Vegetable juice**
- ☐ **Foods that don't need heating up**  
(kamaboko fish sticks, cheese, etc.)
- ☐ **Candy and snacks** (chocolate, etc.)
- ☐ **Nutritional supplements**

### Daily necessities

- ☐ **Household water**  
(leftover bath water)
- ☐ **First-aid kit**
- ☐ **Toilet paper**
- ☐ **Wet tissues**
- ☐ **Disposable heat packs**
- ☐ **Lighter**
- ☐ **Portable battery**
- ☐ **Garbage bags and other plastic bags of various sizes**
- ☐ **Portable radio**
- ☐ **Gloves**
- ☐ **Flashlight**
- ☐ **Batteries**
- ☐ **Portable toilet**  
(If necessary)
- ☐ **Sanitary products**
- ☐ **Baby bottles**
- ☐ **Hearing aids**

## Other

Decide what else is necessary for you and your family!



Watch the video!

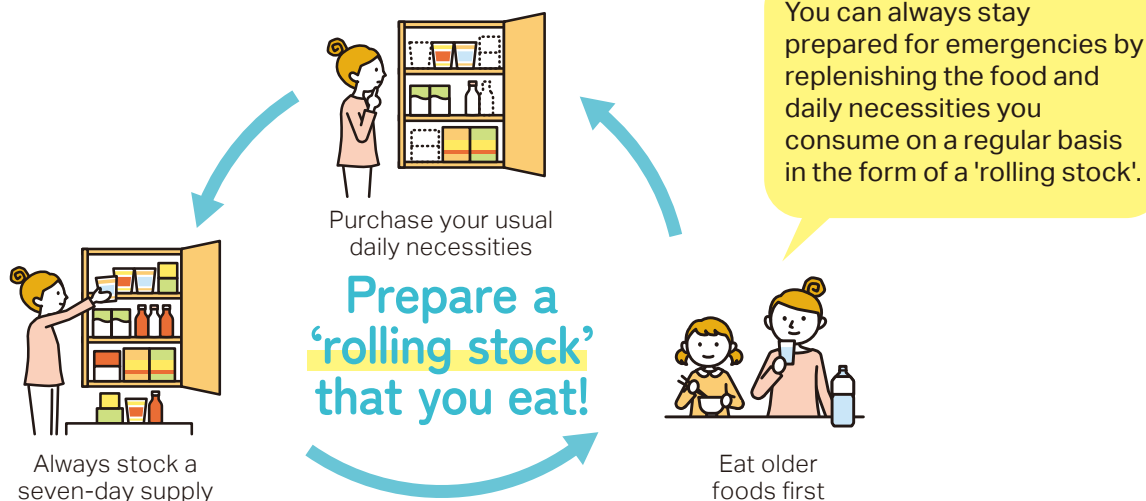


**What's inside my emergency bag?**

(For reference only)



\*Access may not be possible depending on your device.



# Protecting your pets in the event of a disaster

When natural disasters suddenly strike, It is a pet owner's responsibility to protect their pets! Be sure to stay prepared so you can overcome disaster together with your precious pet.

## You can evacuate together with your pet

Evacuation with pets to a designated evacuation shelter in the event of a disaster is called 'accompanied evacuation'. The city allows evacuation together with pets; however, people and pets may not stay in the same space at evacuation sites. Pets must be evacuated to a separate, designated area. The evacuation shelter management committee members of each designated shelter discuss and decide where pets are to take shelter. However, since guide dogs for the visually impaired cannot be evacuated separately, a separate space is reserved for them away from other evacuees.

## Training and healthcare

### Necessary training

#### For dogs

- "Stay", "Come", "Sit", "Down", etc.
- No unnecessary barking
- Trained not to be fearful of or aggressive toward people or other animals
- Can toilet in a designated area

#### For cats

- Trained not to be fearful of or aggressive toward people or other animals
- Can toilet in a designated area
- Kept indoors as much as possible (to prevent them going missing during a disaster)

### Regular healthcare

#### For dogs

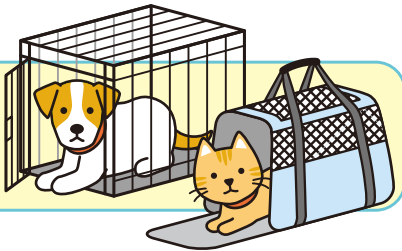
- Rabies vaccine (required)
- General vaccinations
- Prevention and control of parasites such as heart worm, fleas and ticks
- Shampoo and trim fur to keep it clean
- Spaying and neutering if necessary

#### For cats

- General vaccinations
- Elimination of parasites
- Spaying and neutering if necessary

### Train your pet to get used to their cage or carry bag

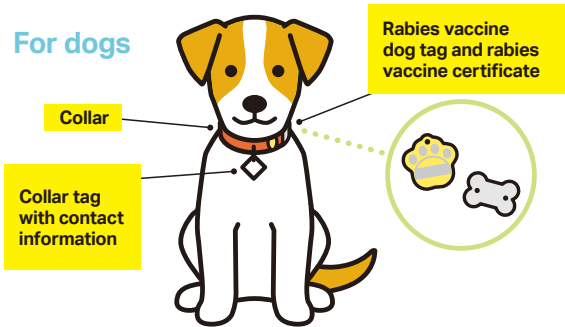
Designating a cage or carry bag as a "safe place" can provide a refuge in the event of a disaster and reduce the stress placed on pets living in evacuation shelters.



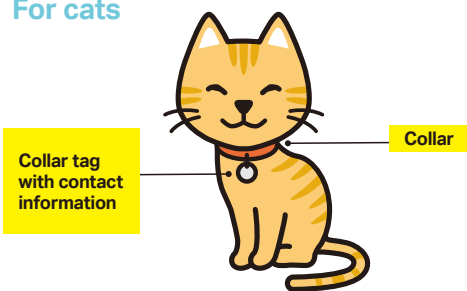
## Preventing pets from going missing

If you have no choice but to leave your pet behind when evacuating or become separated from your pet, be sure that the owner's details are clearly identifiable on the pet so they may be returned to you.

### For dogs



### For cats

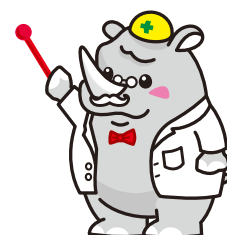


# Stockpiles at designated evacuation shelters in Kofu City

Stockpiles at designated evacuation shelters in Kofu City are stored based on the number of local residents.

## Stockpile list

- Infectious disease prevention equipment  
(hand sanitizer, masks, non-contact thermometers, face shields, etc.)
- Evacuation center set-up kits  
(stationery, forms [evacuation center record form, evacuee list, evacuation center situation report form, etc.], small radio, etc.)
- Stockpiled rice and rice cookies
- Drinking water
- Shelter mats
- Partition set
- Blankets
- Portable toilets
- Generators
- Floodlights
- Pots
- Gasoline cans
- Cooking stoves
- Water filter
- Kettles
- Trailer carts
- Powdered milk
- Stretchers
- Megaphone
- Nursing privacy tent
- Baby wipes
- Disposable baby bottles
- Disposable diapers (newborn, S, M, L, big and adult sizes)
- Breastfeeding baby cribs
- Wheelchair accessible restrooms
- Restroom facilities for the elderly (handrails, backrests)



## Stockpile warehouses in Kofu City



Infectious disease prevention equipment



Generator



Portable toilet