



# Other efforts for reducing trash

## Collecting cooking oil

Unnecessary household cooking oil (waste cooking oil) is collected and reused as livestock feed.

**Please throw out on the specified date/ location.**

\*Please confirm the PR magazine "Kofu" for more information.

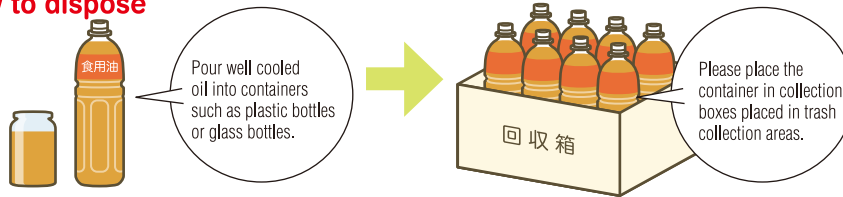
### ● Accepted oil: Cooking oil that has been used at home, expired cooking oil

\*Machine oil, lard (animal oil), and oil used in commercial facilities such as restaurants are not accepted.

Please throw out at specified collection areas on the day of collection between 10:00 a.m. and 3:00 p.m.

The Recycle Plaza accepts between 9:00 a.m. and 8:00 p.m.

### ● How to dispose



### Plastic bottle caps are also collected.

Please place in boxes for plastic bottle caps placed in collection areas of waste cooking oil.



\*They are also collected as plastic containers and packages.

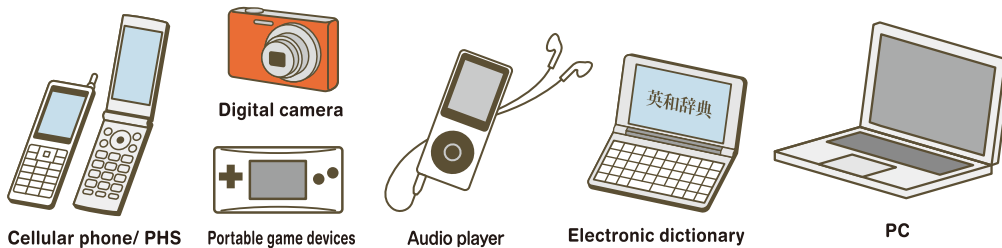
## Recycling of used small home appliances

"Recycling of used small home appliances" is an effort for reusing precious resources such as gold and silver included as components for small home appliances.

**Please directly place small home appliances in special collection boxes located within the following public facilities.**

### ● Accepted items: Small household electronic/ electric products that function with electricity or batteries (accepted size: items that fit in the insertion slot of 30cmx15cm)

\*Fluorescent tubes, light bulbs, and batteries are not accepted, so, please remove them before disposing.



(Other items)

- Video camera
- Telephone
- CD player
- Tape recorder
- MD player
- On-board ETC device
- Console game device
- VICS unit
- IC recorder
- PC

\* Desktop PCs are collected at the Environmental center only.

\*Small home appliances that are once placed in the box cannot be taken out.

\*Please **completely erase personal information such as address information** on cellular phones, PHS, and laptop computers before disposal.

\*Please do not place anything apart from small home appliances such as foreign articles or trash in the box.

\*Directly insert the item in the box, without any bags.

### List of facilities with small home appliance collection boxes

List of facilities with small home appliance collection boxes		Kokubo General Office Administration Center (Southwest Public Hall)
Environmental Center	Ikeda General Office Administration Center (West Public Hall)	Takeda General Office Administration Center (Northeast Public Hall)
Central Public Hall	Kamikuishiki General Office Administration Center	Yamashiro General Office Administration Center (South Public Hall)
Yumura General Office Administration Center (North Public Hall)	City Library	Nakamichi General Office Administration Center
Eastern Kofu General Office Administration Center (East Public Hall)	City Hall Main Building	Northern Yuyukan
Osato General Office Administration Center (Osato Yuyukan)	Civil Hall, in front of office	Recycle Plaza

\*Collection time is according to the open hours of each facility.

Contact

Division of Trash Reduction ☎ 055-241-4327

## Collection of ink cartridges

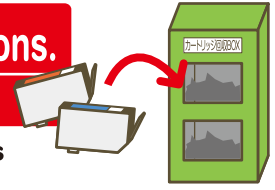
Ink cartridges for computer related devices used at home are collected. (Not for those used in offices)

Please place in collection boxes located in the specified locations.

\*Not for those used in offices

- City Hall Main Building main entrance ●City Library ●Public Halls ●YuyuKans

\*Collection time is within the open hours of each facility. \*Ink cartridges are also collected at recycling stations.



## Purchase support of food waste disposal equipment/ free distribution of EM "Bokashi" (extended slow acting fertilizer)/ free distribution of newspaper compost kit

### Purchase support of food waste disposal equipment

A certain amount of purchasing cost of "Bokashi" container, composter, and electric food waste disposal device is subsidized.

\*There is a limit for support with the number of devices and price. Please contact the Division of Waste Reduction for more information.



### Distribution of "Bokashi"

"Bokashi" for composting household food wastes is distributed for free.

- Distribution amount: 300g/ month for 1 household
- Requirement: Distributed to households that have joined organizations within the city for the purpose of reducing wastes and composting, and other standard households.



### Distribution of newspaper compost kit

Food waste disposal containers using newspapers and shopping baskets are distributed for free at environmental centers.

- Distributed items: Instruction manual, basic materials (peat moss, rice husk ash), shopping basket (2 for 1 set), insect protection cover (non-woven fabric)
- Eligibility: Those who are able to appropriately handle newspaper compost and use as compost.



## Reuse/ recycling of porcelain tableware

Unnecessary household tableware (includes items that are cracked or broken) are collected, then, used as materials for recycled tableware, and those still usable are distributed for free at "Motteke Market."

Please bring to the Division of Waste Reduction, Waste Measure Office on the first floor of the Environmental Center.

\*Tableware from restaurants (and other commercial facilities) are not accepted. \*601-4 Kamicho, Kofu-shi

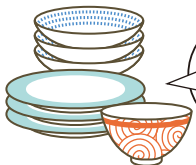
●Open hours: Every Tuesday/ Friday

8:45 a.m.-11:30 a.m. / 1:00 p.m.-4:45 p.m.

\*Except Saturdays/ Sundays/ Holidays/ End of year and New Year's.

### Disposable items

#### Porcelain tableware



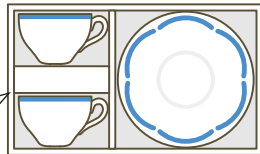
Sort into "usable items" and "cracked/ broken items"



#### Unused tableware

If unused, other kinds of tableware apart from porcelain are also accepted.

If tableware is in a box, please bring as it is.



### Non-disposable items

- Tableware from restaurants (and other commercial facilities)
- Dirty tableware (please clean before disposal)
- Dishes used for pets ●Flower vases
- Original tableware (made in craft making class, etc.)
- Porcelain sake bottle
- Tableware made from reinforced glass
- Buddhist altar fittings and other ritual articles ●Porcelain ash tray
- Tableware with smooth bottoms (accessories that come with purchasing bread, etc.)

Only tableware



Plastic tableware



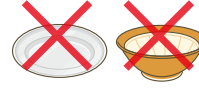
Glass tableware/ container



Earthenware cookers such as "Donabe" (earthenware pots) and "Kamameshi" (small pots for cooking rice and other ingredients together)



Tableware like "condiment grater" with slip resistance on the bottom for stabilization such as silicon



Metal tableware



Mortar



Porcelain objects/ savings box

\*Please do not wrap, but place in boxes to prevent from breaking or cracking.

\*Broken or cracked tableware are also collected. Please sort separately from usable tableware and be careful with injury when bringing in.

# Trash bags for volunteer activities

In the case of conducting volunteer cleanup activities organized by local community associations, other organizations, or individually at public roads, rivers, or parks, trash bags for volunteer activities are distributed for free after going through application.

- For volunteer activity (45L)
- For volunteer activity/ deciduous leaves (90L) (only available in autumn)

Contact

Division of Trash Reduction ☎ 055-241-4327



Burnable trash  
Plastic containers and packages  
Non-burnable trash  
Oversize trash that don't fit in bags  
Flammable/ Ignitable trash  
Recyclable materials (news/cables, valuables)  
Paper/ paper cartons/ clothing material  
Metal/ caps/ plastic bottles/ white food trays  
Mixed paper  
How to bring household trash to garbage disposal facilities  
Items that are not collected as they are non-disposable  
Other efforts for reducing trash  
What to do when a dog or cat dies