

The app is full of useful functions and information about local garbage disposal procedures.

I don't know the proper disposal procedures.



Garbage Disposal Procedures

When should I dispose of my garbage?



Calendar

I don't have time to call for information.



FAQ

How do I dispose of this?



Garbage Sorting Reference

Get the latest information on garbage



Announcements

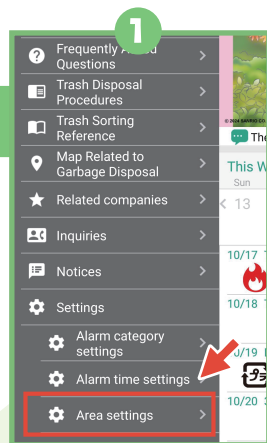
Where are the garbage facilities?



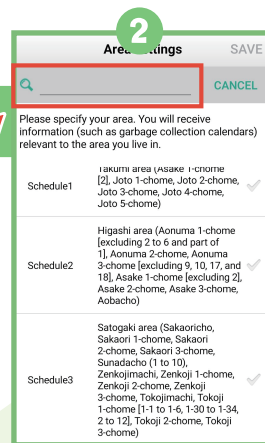
MAP

Area Settings

Please set your area to display your neighborhood's collection days on the calendar.



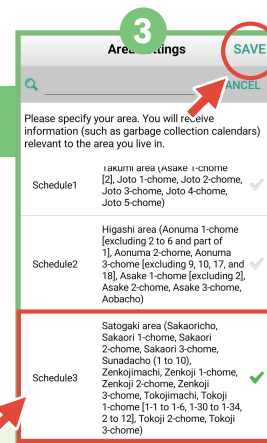
Click on "Settings" and then "Area Settings."



In the search box, type the name of the town you live in.

Search examples

Search your area with the name of the town you live in.
Marunouchi 1-18-1 → Marunouchi
Osatocho100 → Osato



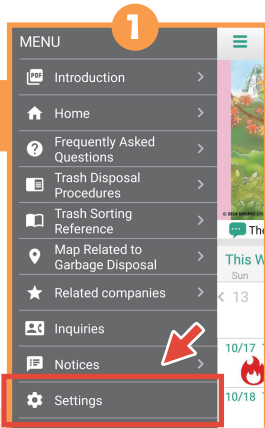
Select the correct area pattern and click on "Save."

Note:
This can be changed at any time.

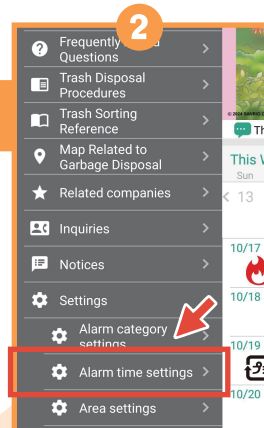
Alert function

Set the alert function to receive garbage collection notifications when you prefer.

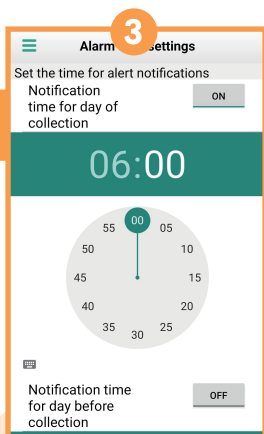
What the notification looks like will vary depending on the device you are using.



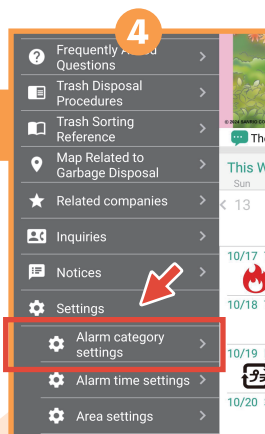
Click on "Settings."



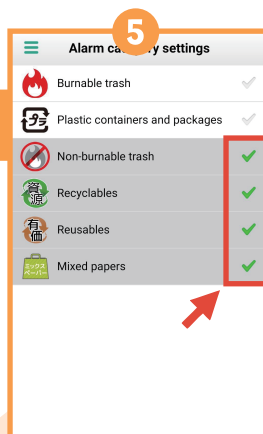
Click on "Alarm Time Settings."



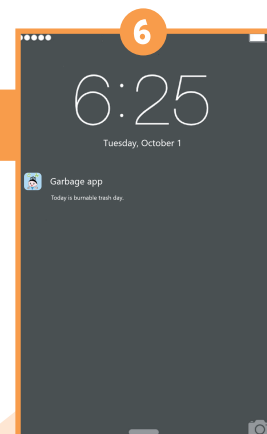
Set it to ON, set the desired time of alert, and click on "Save."



Click on "Alarm Category Settings."



Set the categories you wish to receive alerts for and click on "Save."



You will start receiving alerts at the time you set.