



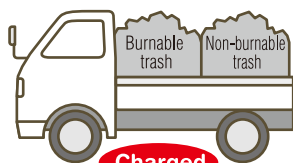
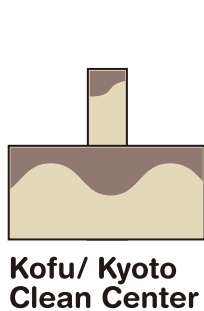
Bringing out household trash to the Kofu/ Kyoto Clean Center

When there are large amounts of trash as a result of major cleanups or moving of houses, the trash can be brought to Kofu/ Kyoto Clean Center on your own or through requesting trash transporters approved by the city.

How to bring

“Designated trash bags”/ “waste disposal tickets” are not necessary. Please bring the trash in transparent/ semitransparent bags.

- Please bring something that proves the trash is from within Kofu City. (driver's license, health care insurance card, public utility charge bill, etc.).
- Trash that is not collected in Kofu City cannot be brought to Kofu/ Kyoto Clean Center.
- It is possible to request trash transporters approved by Kofu City. Please contact Kofu City Waste Operations Cooperatives (TEL: 243-4881).



Trashes are disposed of separately. Please sort when loading.



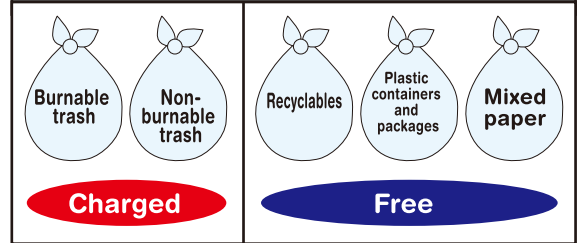
There will be charge if mixed with other trashes. Please sort into recyclables/ plastics/ mixed paper and load.

Please refer to the guidance map on the back cover for details regarding the unloading location.

Contact

Kofu Kyoto Clean Center ☎ **266-7744**

Please sort trashes before bringing in.



There will be charge if mixed with other trashes.

Kofu/ Kyoto Clean Center

(1440-1 Sakaigawacho Terao, Fuefuki-shi, Yamanashi)

[Waste disposal charge for bringing in] 10kg (tax incl.)

Commercial waste	¥164(¥177)
Household waste	¥94(¥101)

*As of April 1, 2017

Open hours

Mon.-Sat.	[a.m.] 8:30-12:00 [p.m.] 1:00-5:00
-----------	---

- Closed on Sunday, holidays, and substitute holidays.
- For the schedule during year end and new year's holiday, please refer to the PR magazine “Kofu,” etc.



Commercial waste (companies and stores, etc.)

Trashes that develop as a result of commercial operations of companies, stores, restaurants, hospitals, factories, etc., **cannot be disposed of at trash collection areas of household trash** regardless of the size. Please dispose of in the following ways.

Sort trash the same way as for household trash

Method 1

Personally bring to Kofu/ Kyoto Clean Center (only standard wastes)
*Mixed paper/ plastic containers and packages cannot be brought in

Method 2

Request a standard trash transporter approved by Kofu City

Contact

Trash Collection Division ☎ **241-4313**



Items that are not collected as they are non-disposable

There are trashes that are difficult to dispose of at facilities or not collected/disposed of according to the Recycling Law in Kofu City. Some of these main items are as follows. Please refer to the trash sorting reference (P15-) in order of Japanese syllabary for further details.

Disposable items according to the Home Appliance Recycling Law



*These must all be household items. Products for commercial purposes cannot be disposed of.

Please dispose of with one of the following methods.

Method 1... Request the store where the item was purchased

- ① In the case of buying a replacement, please request the store where you will be purchasing the new product.
- ② If the item has become unnecessary, please request the store where the product was purchased.

Pay the recycling cost and transportation fee

Home electric appliance shop

Method 2... Transport on your own

In the case of transporting on your own, please pay the recycling cost at the post office, then bring to the specified trash disposal location along with the recycling ticket.

Post office (pay only recycling cost)

Specified trash disposal location

NIPPON EXPRESS Yamanashi Branch ☎274-8211
769 Nakadate, Chuo-shi (within Kokubo Industrial Estate)

Tsuru Kamotsu Jidoshia Inc. Kofu Branch ☎273-5661
2473-11 Yamanokami Ryutsu Danchi, Chuo-shi

Method 3... Request for disposal

Request a trash transporter approved by Kofu City. (collected at each house or location)

Pay recycling costs and transportation fee

Trash transporter

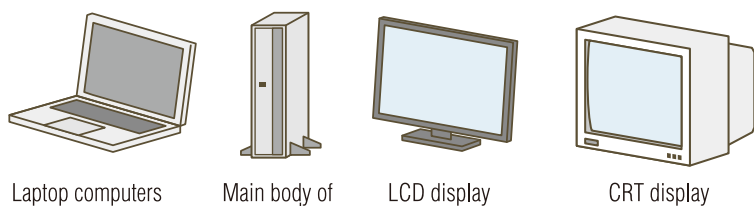
Kofu City Waste Operations Cooperatives
☎243-4881
Open hours for inquiry are from 9:00 a.m. to 4:00 p.m.

*Recycling costs can be confirmed on the Home Appliance Recycling Ticket Center webpage. <http://www.rkc.aeha.or.jp/>

Contact Home Appliance Recycling Ticket Center ☎0120-319640



Items that must be collected or recycled by manufacturers



Standard accessories at the time of purchase (mouse, keyboard, speaker, and cables) are also collected together

- Self-built computers are also collected.
- Peripheral equipment such as printers, scanners, and word processors are not collected, so please dispose of on the day for "non-burnable trash."

Disposal method

Please contact the manufacturer by telephone or through the Internet.

A bank transfer form will be sent from the manufacturer.

Pay the recovery and recycling fee.

An "Eco Yu-Pack delivery slip" will be sent from the manufacturer.

Please package the computer, attach the delivery slip, and request for delivery at the post office (can also be collected at the door).

*Computers that have been on sale after October 2003 (those with a PC recycle logo) are covered with recycling costs at the time of purchase, and therefore, collected for free at the time of disposal.

Please refer to the webpage of Computer R3 Promotion Association for details regarding manufacturer contacts.

Computer R3 Promotion Association TEL 03-5282-7685

PC3R

検索



*There are specific collection boxes for unnecessary small home appliances. →Page 12 <http://pc3r.jp/>

Contact Division of Trash Reduction ☎241-4327



Burnable trash

Plastic containers and packages

Non-burnable trash

Oversize trash that don't fit in bags

Flammable/ignitable trash

Recyclable materials (recyclables, valuables)

Paper/paper containers/clothing material

Metal/cans/plastic bottles/wine/food trays

Mixed paper

How to bring household trash to garbage disposal facilities

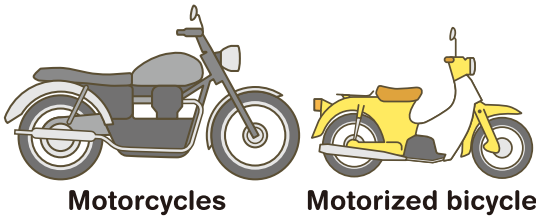
Items that are not collected as they are non-disposable

Other efforts for reducing trash

What to do when a dog or cat dies

Items that are recycled independently by manufacturers

Domestic motorcycle manufacturers and importers are independently cooperating in order to appropriately dispose of and recycle unused motorcycles through the “motorcycle recycle system.”



Motorcycles

Motorized bicycle

Disposal method

Check the specifications of the motorcycle

Please confirm the types of motorcycles that are accepted for recycling as well as required conditions for motorcycles to be recycled. Then go through discarding procedure at the Department of Transportation or at municipal offices.

Select where to bring the motorcycle

This will be the nearest designated collection location or stores handling disused motorcycles with the logo below.



Please contact the following motorcycle recycle call center, or visit the webpage.

Motorcycle recycle call center TEL: 050-3000-0727

Japan Automobile Recycling Promotion Center/JARC 二輪車リサイクル



<http://www.jarc.or.jp/motorcycle/>

Required costs

- In the case of applying at stores handling disused motorcycles, costs for collection at the house and transportation to the designated collection location is required. Please contact the stores for costs as this may vary according to stores.
- There will be no recycling costs if the motorcycle meets the required standard for recycling.

Cellular phones/ PHS are collected for free at stores of telephone companies, etc.

Cellular phones and PHS devices contain precious metals such as gold and silver, as well as rare metals such as lithium and titanium, etc. Please bring unnecessary devices, battery packs, and recharging devices to the nearest store with the logo on the right or cellular phone companies.



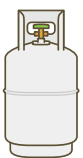
Please visit the Telecommunications Carriers Association webpage for more information.

<http://www.mobile-recycle.net/> TEL 03-3502-0991

Small home appliances can be placed in special boxes located within designated public facilities.
→Page 12

Contact Division of Trash Reduction ☎ **241-4327**

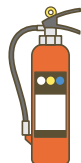
LP gas cylinders



Please request the LP gas store handling LP gas for your residence.

Please contact
Yamanashi LP Gas Association for inquiries
☎ **228-4171**

Fire extinguishers



Please contact
companies offering recycling service or
the Fire Extinguisher Recycle Promotion Center.
☎ **03-5829-6773**

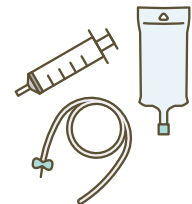
Pesticide/ paint/ dangerous articles

Gasoline/ kerosene/
thinner/ oil etc.



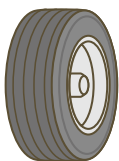
Please contact stores or
exclusive stores.

In-house medical wastes



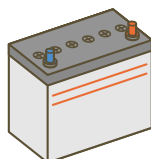
Please contact the
hospital that prescribed
the medical items.

Tires



Please contact the
gas station, tire
stores, or repair
factory.

Batteries



Please contact stores
or exclusive stores.

Construction wastes

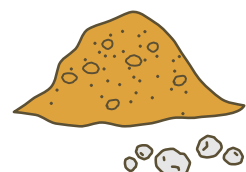
For items
that would be
categorized
as industrial wastes



Please contact
Yamanashi Industrial Waste Association
☎ **244-0755**

Please contact specialists
recycling rocks and gravel.

Rocks/ gravel



Please contact
specialists recycling
rocks and gravel.



Other efforts for reducing trash

Collecting cooking oil

Unnecessary household cooking oil (waste cooking oil) is collected and reused as livestock feed.

Please throw out on the specified date/ location.

*Please confirm the PR magazine "Kofu" for more information.

● Accepted oil: Cooking oil that has been used at home, expired cooking oil

*Machine oil, lard (animal oil), and oil used in commercial facilities such as restaurants are not accepted.

Please throw out at specified collection areas on the day of collection between 10:00

a.m. and 3:00 p.m.

The Recycle Plaza accepts between 9:00 a.m. and 8:00 p.m.

● How to dispose



Pour well cooled oil into containers such as plastic bottles or glass bottles.



Please place the container in collection boxes placed in trash collection areas.

Plastic bottle caps are also collected.



Please place in boxes for plastic bottle caps placed in collection areas of waste cooking oil.

*They are also collected as plastic containers and packages.

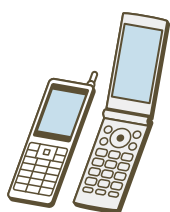
Recycling of used small home appliances

"Recycling of used small home appliances" is an effort for reusing precious resources such as gold and silver included as components for small home appliances.

Please directly place small home appliances in special collection boxes located within the following public facilities.

● Accepted items: Small household electronic/ electric products that function with electricity or batteries (accepted size: items that fit in the insertion slot of 30cmx15cm)

*Fluorescent tubes, light bulbs, and batteries are not accepted, so, please remove them before disposing.



Cellular phone/ PHS



Digital camera



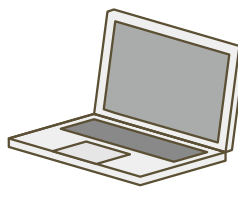
Portable game devices



Audio player



Electronic dictionary



PC

(Other items)

- Video camera
- Telephone
- CD player
- Tape recorder
- MD player
- On-board ETC device
- Console game device
- VICS unit
- IC recorder
- PC

* Desktop PCs are collected at the Environmental center only.

*Small home appliances that are once placed in the box cannot be taken out.

*Please completely erase personal information such as address information on cellular phones, PHS, and laptop computers before disposal.

*Please do not place anything apart from small home appliances such as foreign articles or trash in the box.

*Directly insert the item in the box, without any bags.

List of facilities with small home appliance collection boxes

Environmental Center	Ikeda General Office Administration Center (West Public Hall)	Kokubo General Office Administration Center (Southwest Public Hall)
Central Public Hall	Kamikuishiki General Office Administration Center	Takeda General Office Administration Center (Northeast Public Hall)
Yumura General Office Administration Center (North Public Hall)	City Library	Yamashiro General Office Administration Center (South Public Hall)
Eastern Kofu General Office Administration Center (East Public Hall)	City Hall Main Building	Nakamichi General Office Administration Center
Osato General Office Administration Center (Osato Yuyukan)	Civil Hall, in front of office	Northern Yuyukan
		Recycle Plaza

*Collection time is according to the open hours of each facility.

Contact

Division of Trash Reduction ☎ 241-4327

Collection of ink cartridges

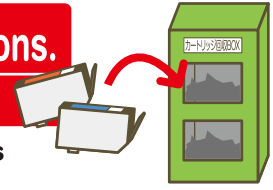
Ink cartridges for computer related devices used at home are collected. (Not for those used in offices)

Please place in collection boxes located in the specified locations.

*Not for those used in offices

- City Hall Main Building main entrance ● City Library ● Public Halls ● YuyuKans

*Collection time is within the open hours of each facility. *Ink cartridges are also collected at recycling stations.



Purchase support of food waste disposal equipment/ free distribution of EM "Bokashi" (extended slow acting fertilizer)/ free distribution of newspaper compost kit

Purchase support of food waste disposal equipment

A certain amount of purchasing cost of "Bokashi" container, composter, and electric food waste disposal device is subsidized.

*There is a limit for support with the number of devices and price. Please contact the Division of Waste Reduction for more information.



Distribution of "Bokashi"

"Bokashi" for composting household food wastes is distributed for free.

- Distribution amount: 300g/ month for 1 household
- Requirement: Distributed to households that have joined organizations within the city for the purpose of reducing wastes and composting, and other standard households.



Distribution of newspaper compost kit

Food waste disposal containers using newspapers and shopping baskets are distributed for free at environmental centers.

- Distributed items: Instruction manual, basic materials (peat moss, rice husk ash), shopping basket (2 for 1 set), insect protection cover (non-woven fabric)
- Eligibility: Those who are able to appropriately handle newspaper compost and use as compost.



Reuse/ recycling of porcelain tableware

Unnecessary household tableware (includes items that are cracked or broken) are collected, then, used as materials for recycled tableware, and those still usable are distributed for free at "Motteke Market."

Please bring to the Division of Waste Reduction, Waste Measure Office on the first floor of the Environmental Center.

*Tableware from restaurants (and other commercial facilities) are not accepted. *601-4 Kamicho, Kofu-shi

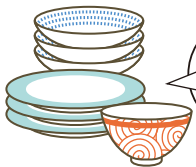
● Open hours: Every Tuesday/ Friday

8:45 a.m.-11:30 a.m. / 1:00 p.m.-4:45 p.m.

*Except Saturdays/ Sundays/ Holidays/ End of year and New Year's.

Disposable items

Porcelain tableware



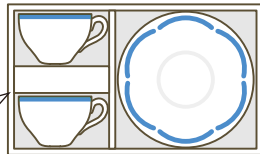
Sort into "usable items" and "cracked/ broken items"



Unused tableware

If unused, other kinds of tableware apart from porcelain are also accepted.

If tableware is in a box, please bring as it is.



Non-disposable items

- Tableware from restaurants (and other commercial facilities)
- Dirty tableware (please clean before disposal)
- Dishes used for pets ● Flower vases
- Original tableware (made in craft making class, etc.)
- Porcelain sake bottle
- Tableware made from reinforced glass
- Buddhist altar fittings and other ritual articles ● Porcelain ash tray
- Tableware with smooth bottoms (accessories that come with purchasing bread, etc.)

Only tableware



Plastic tableware



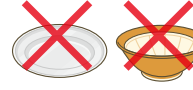
Glass tableware/ container



Earthenware cookers such as "Donabe" (earthenware pots) and "Kamameshi" (small pots for cooking rice and other ingredients together)



Tableware like "condiment grater" with slip resistance on the bottom for stabilization such as silicon



Metal tableware



Mortar



Porcelain objects/ savings box

*Please do not wrap, but place in boxes to prevent from breaking or cracking.

*Broken or cracked tableware are also collected. Please sort separately from usable tableware and be careful with injury when bringing in.

Trash bags for volunteer activities

In the case of conducting volunteer cleanup activities organized by local community associations, other organizations, or individually at public roads, rivers, or parks, trash bags for volunteer activities are distributed for free after going through application.

- For volunteer activity (45L) ● For volunteer activity/ deciduous leaves (90L) (only available in autumn)

Contact

Division of Trash Reduction ☎ 241-4327



Burnable trash

Plastic containers and packages

Non-burnable trash

Oversize trash that don't fit in bags

Flammable/ Ignitable trash

Recyclable materials (news/paper/valuables)

Paper/ paper cartons/ clothing material

Metal/ caps/ plastic bottles/ white food trays

Mixed paper

How to bring household trash to garbage disposal facilities

Items that are not collected as they are non-disposable

Other efforts for reducing trash

What to do when a dog or cat dies

