

History and Scenic Beauty

Takeda Shrine



2611, Kofuchu-machi, Kofu city
☎055-252-2609

This is the site where three generations of the Takeda clan (Nobutora, Shingen and Katsuyori) governed the area for 63 years. Various treasures, ancient documents, body armors and swords that have been passed down in the Takeda family are displayed at the treasure house.

Kai-zenko-ji Temple



3-36-1 Zenko-ji, Kofu city
☎055-233-7570

This temple was built in Kofu to store the Shinshu-zenko-ji temple's Buddhist statues and treasures including its principal statue "Am-itabha Tathagata," in order to save them from being destroyed by the fires of the Battle of Kawanakajima.

Maizuru Castle Park (Ruins of Kofu Castle)

1-5 Marunouchi, Kofu city (on the east side of Yamanashi Prefectural Office)
☎055-227-6179 (Maizuru Castle Park Administration Office)



The construction of Kofu Castle was started by Hideyoshi Toyotomi's command, and it was brought to completion by Nagamasa Asano and his son Yoshinaga. Through an improvement project, Inari-yagura Tower was rebuilt; so was Yamanote-gomon Gate in April 2007.

Kofu Gozan (5 major temples in Kofu)

Chozen-ji Temple



208 Atago-machi, Kofu city

It is the family temple of Lady Oi, Shingen's mother, who became a nun after Nobutora was banished. This is where Shingen learned the basics of Confucianism, Zen Buddhism, and how to govern a nation.

Nojo-ji Temple



2153 Toko-ji-machi, Kofu city
☎055-233-9396

This temple was built by Nobumori Takeda. On the grounds you will see a stone tablet inscribed with Basho's haiku "the harvest moon/ circling my pond/ the night draws to an end" and a monument of the dragon from the Legend of Oike.

Toko-ji Temple



3-7-37 Toko-ji, Kofu city
☎055-233-9070

This temple was built by highly-respected priest Doryu Rankel, who also built Kamakura Kencho-ji Temple. The graves of Yoshinobu Takeda (Shingen's son) and Yorishige Suwa are located on the grounds. Its famous garden has had an influence on Japan's latter-day gardening culture.

Enko-in Temple



500-1 Iwakubo-cho, Kofu city
☎055-253-8144

It is the family temple of Shingen's wife Lady Sanjo (a daughter of the court noble Sanjo). Shingen's donation letter and his treasures are stored.

Hosen-ji Temple



2595 Wada-machi, Kofu city
☎055-252-6128

The grave of Katsuyori Takeda, the last head of the Takeda family, is located on the grounds. He was defeated in the Battle of Nagashino and died in Mt. Temmoku. There is a famous legend called "Keko-mi-gobo."

KOFU CITY GUIDE MAP



Museums

Yamanashi Prefectural Museum of Art

1-4-27 Kugawa, Kofu city
☎055-228-3322

This museum is popularly known as a Millet museum, with his masterpieces such as "The Sower," "Summer, The Gleaners," and "The Return of Flock" exhibited.



Yamanashi Prefectural Literary Pavilion

1-5-35 Kugawa, Kofu city
☎055-235-8080

There are sections featuring scholars of literature who are associated with Yamanashi Prefecture, as well as sections of Ryunosuke Akutagawa and Dakotsu Iida. Manuscripts written by Osamu Dazai, who stayed in Kofu, are also on exhibit.



Yamanashi Prefectural Science Center

358-1 Atago-machi, Kofu city
☎055-254-8151

It is an indoor learning facility where you can learn science while enjoying various activities. You can also enjoy beautiful images of stars in the planetarium.



Kaiterasu

3-13-25 Toko-ji, Kofu city
☎055-237-1641

This local industry center displays and sells major local products from throughout Yamanashi Prefecture, such as jewelry, precious metals, wine, seals, and Inden leather products. You can also enjoy activities such as wine-tasting.



Hot springs and Nature

Yumura Hot Spring

Yumura Hot Spring Inn Cooperative Association
☎055-252-2261

This historic hot spring is said to have been opened by Kobo Daishi in 808. The quiet resort is located in the heart of Mt. Yumura and was called "Shima-no-yu" in ancient times. It celebrates 1,200 years since it was opened.



Sekisui-ji Hot Spring

Kofu Hotel Cooperative Association
☎055-222-9733

This idyllic hot spring located at the foot of Mt. Yogi in northern Kofu is surrounded by beautiful nature and is known as a celebrated spa. Sekisui-ji Temple is located nearby, which is said to be the birthplace of Shingen Takeda.



Shosenkyo Gorge

☎055-237-5702 (Kofu City Hall Tourism Development Division)
☎055-226-6550 (Kofu City Tourist Agency)

Located in Chichibu Tama Kai National Park, the gorge has been designated as a place of scenic beauty by the government. It is famous for Sengataki Fall and the giant rock Kakuembo. You can take a ride along the gorge in a horse-drawn carriage.



Strawberry Farms

Omagari-cho, Kofu city
JA Kofu-shi ☎055-243-9609

Strawberry farms of Omagari-cho are located about 10 minutes from Kofu-minami Interchange on Chuo Expressway. They are open from early January through mid-May. There are about 10 plastic greenhouse farms.



Grape Farms

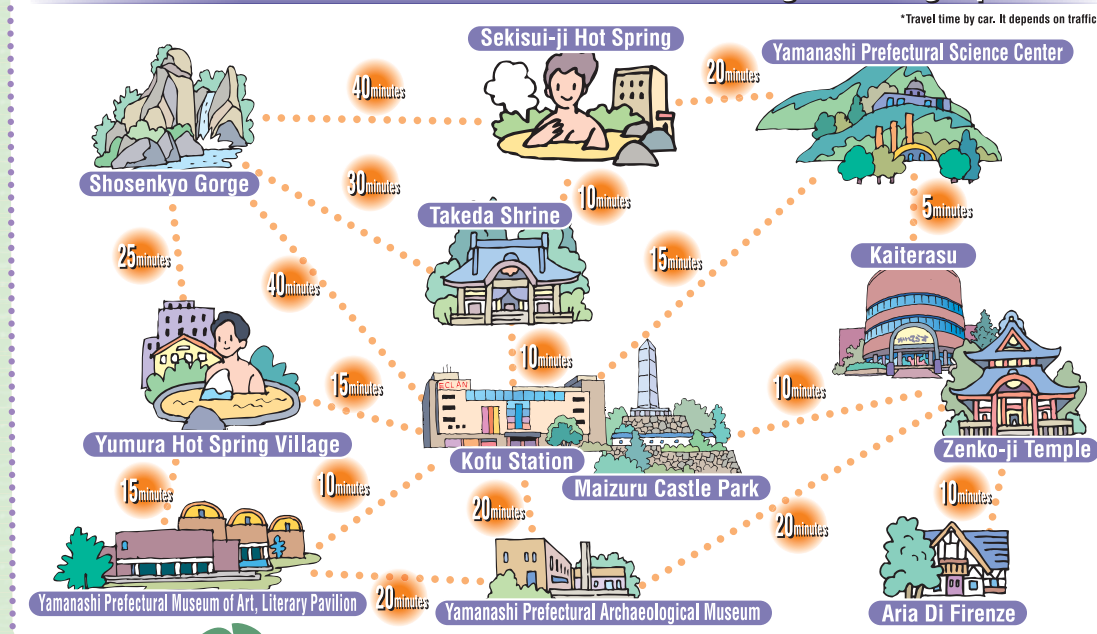
Kofu Grape Village Tourist Association
☎055-254-0125

Kanko Yuran Grape Farm is located about 10 minutes east from the Kofu station by car. You can enjoy picking various kinds of grapes from July (Delaware) to November (Koshu grape).



Travel time between Kofu Station and Sightseeing Spot

*Travel time by car. It depends on traffic.



Fruits of Kofu

Spring Summer Autumn Winter

January February March April May June July August September October November December

Strawberries (January - May)

Contact:
JA Kofu-shi Farming and Sales Division
TEL: 055-243-9609

Corn

early May - late July

Contact:
Fudoki-no-oka Farm Stand

Grapes (late July - early November)

Contact: Kofu Grape Village Tourist Association

TEL: 055-254-0125

Pears (early August - late August)

TEL: 055-266-3858

Contact

Kofu City Tourism Development Division

Kofu City Tourist Agency

Kofu City Tourist Information Center

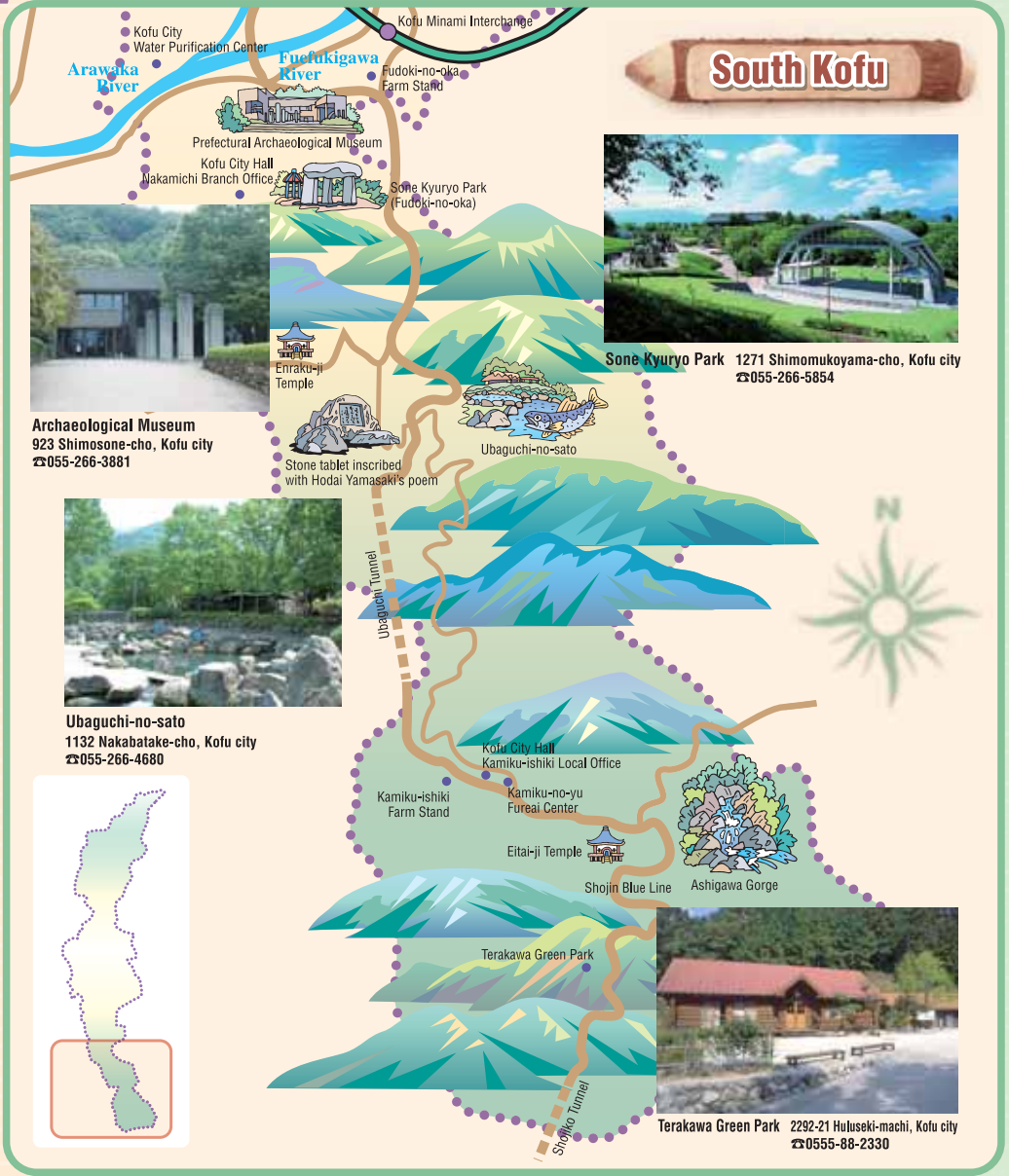
TEL: 055-237-5702

TEL: 055-226-6550

TEL: 055-226-6978

<http://www.e-kofu.com>

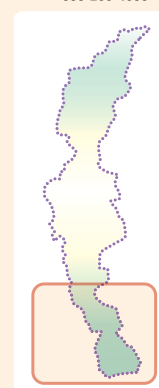
South Kofu



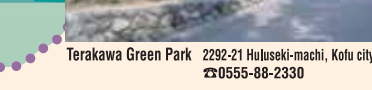
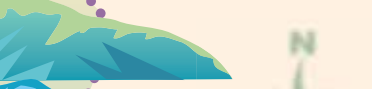
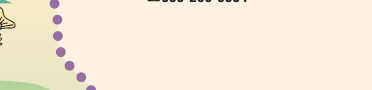
Archaeological Museum
923 Shimosone-cho, Kofu city
☎055-266-3881



Ubaguchi-no-sato
1132 Nakabatake-cho, Kofu city
☎055-266-4680



Sone Kyuryo Park
1271 Shimomukoyama-cho, Kofu city
☎055-266-5854



KOFU CITY GUIDE MAP

Sekisui-ji Hot Spring

It is a hidden hot spring related to Shingen Takeda. It is said that Shingen healed wounded soldiers here. You can see a beautiful night view of Kofu Basin.

Sekisui-ji Hot Spring

Mt. Yogai

Sekisui-ji Temple

Takeda Shrine

Takeda Shrine

This shrine enshrines Shingen Takeda and is said to give us good luck to win. It stands on the site of Tsutsujigasaki Palace where three generations of the Takeda clan lived.

Yumura Hot Spring Village

This hot spring is said to have been found by Kobo Daishi about 1,200 years ago. It is also said that Shingen Takeda healed wounds at this spring.

Statue of Shingen Takeda

Placed in 1969, the statue depicts Shingen in the Battle of Kawanakajima, who was described as "undefeatable as a mountain." His heroic statue watches over the development of his hometown.

Atagoyama Kodomo-no-kuni

Prefectural Science Center

Atago Tunnel

Yamanashi Eiwa Junior-high & High Schools

Kofu Grape Village

Chozen-ji Temple

to Shinjuku

to Minobu

Fujikawa Elementary School

Maizuru Castle Park

Yoshiyasu Yanagisawa became lord of Kofu Castle in the Edo period and the castle town prospered. The castle was beautiful like a crane flapping its wings; therefore it is also called "Maizuru (dancing crane) Castle." This park is popular among Kofu citizens as a place to take a break today. The Inari-yagura tower was rebuilt in recent years, which restores the atmosphere of the Edo period.

Yokokinju Shrine

Yamanashi Chuo Bank Finance Museum

(reservation required for group visitors)
It is a museum displaying finance-related materials. Historical records and actual coins used in ancient times and today including Koshu-kin are on display.
TEL.055-223-3090

Finance Museum

Inden Museum

Inden Museum

"Koshu Inden" is the only leather craft that has been handed down in Japan. This museum displays products including classics from before the Edo period to the early Showa period.
TEL.055-220-1621

Yanagimachi Shrine

Kofu Chamber of Commerce & Industry

to Prefectural Museum

Yamanashi Kemmin Credit Union

Bank of Japan Kofu Branch

Chuo Park

Kofu Police Station

Kofu City Hall

Resona Bank

Mitsui Sumitomo Bank

Heiwa Street

South Exit

Bus Terminal

Yamako Department Store

Shinkyo Elementary School

Yamanote Street

North Exit

Gokoku Shrine

Enko-in Temple

Grave of Shingen Takeda

Yamanashi Culture Hall

Sadoya Winery

Tokyo Gus

Maizuru Overpass

JR Kofu Station Eclan

JR Chuo Main Line

JR Minobu Line

Inari-yagura Tower

Ruins of Kofu Castle

Kofu Tax Office

Prefectural Police Headquarters

Prefectural Office East Parking

Prefectural Hall

Kobai-kita Street

Kobai Street

Joto Street

Ginza Street

Kasuga Street

Museum Street

Heiwa Street

Maizuru Elementary School

Yamanashi Volunteer Center

NTT DoCoMo

NTT

Okajima Department Store

Kofu Hot Spring Village

Mizuho Bank

Machinaka Ventforest Plaza

Sakuraza

Yanagimachi Shrine

Kofu Chamber of Commerce & Industry

Yamanashi Kemmin Credit Union

Bank of Japan Kofu Branch

Chuo Park

Kofu Police Station

Kofu City Hall

Resona Bank

Mitsui Sumitomo Bank

Heiwa Street

South Exit

Bus Terminal

Yamako Department Store

Shinkyo Elementary School

Yamanote Street

North Exit

Gokoku Shrine

Enko-in Temple

Grave of Shingen Takeda

Yamanashi Culture Hall

Sadoya Winery

Tokyo Gus

Maizuru Overpass

JR Kofu Station Eclan

JR Chuo Main Line

JR Minobu Line

Inari-yagura Tower

Ruins of Kofu Castle

Kofu Tax Office

Prefectural Police Headquarters

Prefectural Office East Parking

Prefectural Hall

Kobai-kita Street

Kobai Street

Joto Street

Ginza Street

Kasuga Street

Museum Street

Heiwa Street

Maizuru Elementary School

Yamanashi Volunteer Center

NTT DoCoMo

NTT

Okajima Department Store

Kofu Hot Spring Village

Mizuho Bank

Machinaka Ventforest Plaza

Sakuraza

Yanagimachi Shrine

Kofu Chamber of Commerce & Industry

Yamanashi Kemmin Credit Union

Bank of Japan Kofu Branch

Chuo Park

Kofu Police Station

Kofu City Hall

Resona Bank

Mitsui Sumitomo Bank

Heiwa Street

South Exit

Bus Terminal

Yamako Department Store

Shinkyo Elementary School

Yamanote Street

North Exit

Gokoku Shrine

Enko-in Temple

Grave of Shingen Takeda

Yamanashi Culture Hall

Sadoya Winery

Tokyo Gus

Maizuru Overpass

JR Kofu Station Eclan

JR Chuo Main Line

JR Minobu Line

Inari-yagura Tower

Ruins of Kofu Castle

Kofu Tax Office

Prefectural Police Headquarters

Prefectural Office East Parking

Prefectural Hall

Kobai-kita Street

Kobai Street

Joto Street

Ginza Street

Kasuga Street

Museum Street

Heiwa Street

Maizuru Elementary School

Yamanashi Volunteer Center

NTT DoCoMo

NTT

Okajima Department Store

Kofu Hot Spring Village

Mizuho Bank

Machinaka Ventforest Plaza

Sakuraza

Yanagimachi Shrine

Kofu Chamber of Commerce & Industry

Yamanashi Kemmin Credit Union

Bank of Japan Kofu Branch

Chuo Park

Kofu Police Station

Kofu City Hall

Resona Bank

Mitsui Sumitomo Bank

Heiwa Street

South Exit

Bus Terminal

Yamako Department Store

Shinkyo Elementary School

Yamanote Street

North Exit

Gokoku Shrine

Enko-in Temple

Grave of Shingen Takeda

Yamanashi Culture Hall

Sadoya Winery

Tokyo Gus

Maizuru Overpass

JR Kofu Station Eclan

JR Chuo Main Line

JR Minobu Line

Inari-yagura Tower

Ruins of Kofu Castle

Kofu Tax Office

Prefectural Police Headquarters

Prefectural Office East Parking

Prefectural Hall

Kobai-kita Street

Kobai Street

Joto Street

Ginza Street

Kasuga Street

Museum Street

Heiwa Street

Maizuru Elementary School

Yamanashi Volunteer Center

NTT DoCoMo

NTT

Okajima Department Store

Kofu Hot Spring Village

Mizuho Bank

Machinaka Ventforest Plaza

Sakuraza

Yanagimachi Shrine

Kofu Chamber of Commerce & Industry

Yamanashi Kemmin Credit Union

Bank of Japan Kofu Branch

Chuo Park

Kofu Police Station

Kofu City Hall

Resona Bank

Mitsui Sumitomo Bank

Heiwa Street

South Exit

Bus Terminal

Yamako Department Store

Shinkyo Elementary School

Yamanote Street

North Exit

Gokoku Shrine

Enko-in Temple

Grave of Shingen Takeda

Yamanashi Culture Hall

Sadoya Winery

Tokyo Gus

Maizuru Overpass

JR Kofu Station Eclan

JR Chuo Main Line

JR Minobu Line

Inari-yagura Tower

Ruins of Kofu Castle

Kofu Tax Office

Prefectural Police Headquarters

Prefectural Office East Parking

Prefectural Hall

Kobai-kita Street

Kobai Street

Joto Street

Ginza Street

Kasuga Street

Museum Street

Heiwa Street

Maizuru Elementary School

Yamanashi Volunteer Center

NTT DoCoMo

NTT

Okajima Department Store

Kofu Hot Spring Village

Mizuho Bank

Machinaka Ventforest Plaza

Sakuraza

Yanagimachi Shrine

Kofu Chamber of Commerce & Industry

Yamanashi Kemmin Credit Union

Bank of Japan Kofu Branch

Chuo Park

Kofu Police Station

Kofu City Hall

Resona Bank

Mitsui Sumitomo Bank

Heiwa Street

South Exit

Bus Terminal

Yamako Department Store

Shinkyo Elementary School

Yamanote Street

North Exit

Gokoku Shrine

Enko-in Temple

Grave of Shingen Takeda

Yamanashi Culture Hall

Sadoya Winery

Tokyo Gus

Maizuru Overpass

JR Kofu Station Eclan

JR Chuo Main Line

JR Minobu Line

Inari-yagura Tower

Ruins of Kofu Castle

Kofu Tax Office

Prefectural Police Headquarters

Prefectural Office East Parking

Prefectural Hall

Kobai-kita Street

Kobai Street

Joto Street